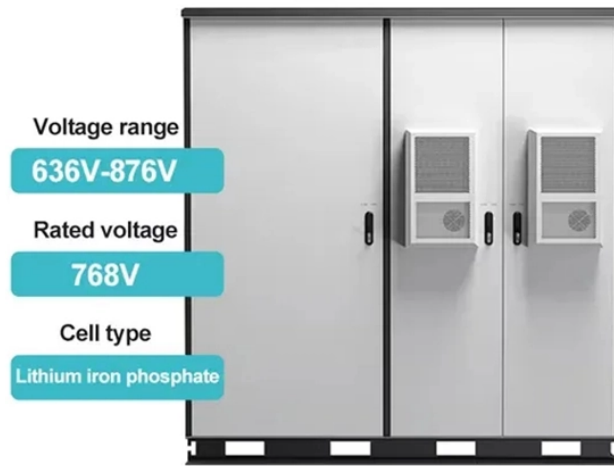
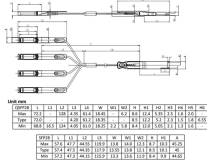


## Secondary Distribution Box Board



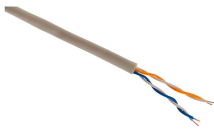
## Secondary Distribution Box Board



A spot network typically comprises a secondary network that serves a singular, concentrated load, such as a high-rise building or shopping mall, necessitating a high level of ...



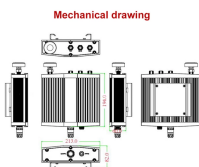
Discover the robust selection of secondary pedestals at Hubbell, designed to enhance and secure your power distribution needs. These secondary pedestals are built to withstand harsh environments, ...



Trusted by Manufacturers · Diverse Power Options



The heart of the GEWISS offer is represented by energy connection, distribution, derivation and transport systems. A complete range of innovative products, Made in Italy, and designed to create ...



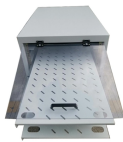
Understand distribution boxes (DB boxes) in 5 minutes. Learn about types, components, functions, and uses. Find the perfect DB box for your needs.



Modular zone distribution system for raised floors, improving cable management and installation.



Secondary: Intermediate panel, routes power to buildings or zones. Tertiary: Final distribution point for equipment or household use. This structure ensures effective power management, safety, and ...



Learn about the three-tier power distribution system (main secondary tertiary distribution boards) in a new residential area including their roles connections and safety measures for 0.4kV power supply.



The Secondary Distribution Box (SDB) receives power from Main Power Distribution box via an extender cable and provides a central power distribution to feed normal branch circuits to the electric floor ...



Whether you're working on a residential building, a commercial facility, or a large industrial plant, understanding the different types of distribution boxes is essential for safety, efficiency, and long-term ...



An electrical sub panel, also known as a sub panel box or breaker box, is an essential component of an electrical system. It serves as a secondary distribution point for electricity, receiving power from the ...

## Contact Us

For more information, pricing, or custom network solutions, please contact us:

Website: <https://www.hashherbcafe.co.za>

Email: [hello@hashherbcafe.co.za](mailto:hello@hashherbcafe.co.za)

Phone: +27 63 814 7295

Address: 15 Galaxy Road, Linbro Business Park, Johannesburg, 2065, South Africa

This document is for informational purposes only. Specifications subject to change without notice.

