

Sc Single-mode Single-fiber Gigabit Optical Module



Sc Single-mode Single-fiber Gigabit Optical Module



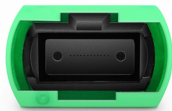
AUTOMATICALLY adapts to 10 Mbit/s, 100 Mbit/s (Fast Ethernet) or 1000 Mbit/s ...



Gigabit Fiber SFP Optical Transceiver Module
1000Base-LX (LC) Single-Mode Port, 20 km (12.4 mi.) SKU: 506724 ISFP-1G-LCSM-20KM In stock
Request access to B2B pricing here.



AUTOMATICALLY adapts to 10 Mbit/s, 100 Mbit/s (Fast Ethernet) or 1000 Mbit/s (Gigabit) Speed And Extends Ethernet over Single Mode Single Fiber to up to 20 km (12.42 Miles)



Compatible with optical fiber equipment from Huawei, ZTE, H3C, Cisco, TPLINK, Ruijie, Dell, HP, Intel, NETGEAR, Juniper, AMD and other brands. Small Form Factor Pluggable (SFP) transceivers are ...



Compatible with optical fiber equipment from Huawei, ZTE, H3C, Cisco, TPLINK, Ruijie, Dell, HP, Intel, NETGEAR, Juniper, AMD and other brands. Small Form ...



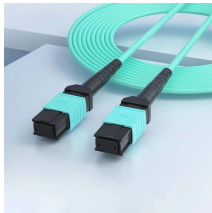
Our 1 Gigabit Singlemode SFP Transceivers offer high-performance, reliable connectivity for singlemode fiber optic networks. These transceivers are engineered for long-distance applications, supporting ...



TL-MC101 is a media converter designed to convert 1000BASE-LX fiber to 1000Base-T copper media or vice versa. Designed under IEEE802.3ab 1000Base-T and IEEE802.3z 1000Base-LX standards, TL ...



The 1000BASE-ZX SFP operates on standard single-mode fiber-optic link spans of up to approximately 70 km in length. The SFP provides an optical link budget of 21 dB, but the precise link span length ...



This 1.25G SC SFP Module is a high-performance 1.25G SFP fiber module designed for 20km bidirectional data transmission over single-mode fiber (SMF). This SFP optical module supports ...



Search Newegg for single mode sc fiber media converters. Get fast shipping and top-rated customer service.



Discover SFP Gigabit single-strand BiDi modules for 20Km with SC connector. Cisco compatible - buy now for efficient fiber links!



This data sheet describes the benefits, specifications, and ordering information for the Cisco SFP Modules for Gigabit Ethernet Applications.

Contact Us

For more information, pricing, or custom network solutions, please contact us:

Website: <https://www.hashherbcafe.co.za>

Email: hello@hashherbcafe.co.za

Phone: +27 63 814 7295

Address: 15 Galaxy Road, Linbro Business Park, Johannesburg, 2065, South Africa

This document is for informational purposes only. Specifications subject to change without notice.

