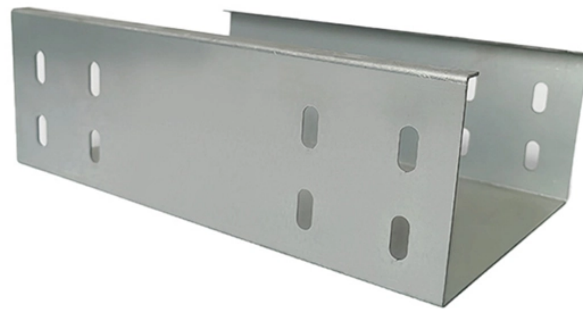


SFP10GSR optical module



SFP10GSR optical module



THE IT PRO'S CHOICE: Designed and built for IT Professionals, this SFP module is backed for life (lifetime of module, not network switch), including free lifetime 24/5 multi-lingual technical assistance.



The Cisco SFP-10G-SR 10GBASE-SR/SW Ethernet transceiver is a Duplex SFP+ transceiver for optical communications, rated for distances up to 300m and a maximum bandwidth of 10Gbps.



Buy Cisco 10GBASE-SR SFP+ Transceiver Module featuring 10 Gigabit Ethernet Protocol, Dual LC/PC Multi Mode Connector, 10 Gb/s Data Transfer Rate, ...



A 10GBASE-SR SFP module, also called 10G SFP+ SR, is a 10 Gbps multimode optical transceiver using 850 nm VCSEL laser technology and duplex LC connectors, designed for short-reach fiber ...



The Cisco SFP-10G-SR-X is a multirate* 10GBASE-SR, 10GBASE-SW and OTU2/OTU2e module for extended operating temperature range. It supports a link length of 26m on standard Fiber Distributed ...



FS 10GbE SFP+ module solutions provide a wide variety of 10 Gigabit Ethernet connectivity options for data centers, enterprise wiring closets, Internet Service ...



The Cisco SFP-10G-SR is an enterprise-class SFP+ transceiver designed for high-density 10GBASE-SR links over multi-mode fiber. Delivering 10 Gbps over MMF up to 300 meters at 850 nm with LC ...



10GBASE-SR SFP+ module: 10Gb/s data rate, Multimode, duplex LC connector, 850nm wavelength, the transmission distance up to 300m, DDM support, working temperature: 0°C ~ +70°C.



Know your gear "Designed to work with most Cisco® networking equipment, the Cisco SFP-10G-SR-SFP+ Transceiver Module is ideal for large data centers and enterprise networks. It offers 10-gigabit ...



Buy Cisco 10GBASE-SR SFP+ Transceiver Module featuring 10 Gigabit Ethernet Protocol, Dual LC/PC Multi Mode Connector, 10 Gb/s Data Transfer Rate, Supports 26m Link Length on FDDI, 850 nm ...



Genuine Amphenol 10GBASE-SR SFP+ Optical Transceiver Modules provide a high-density, high-performance interface for 10-Gigabit Ethernet and Fibre Channel applications.

Contact Us

For more information, pricing, or custom network solutions, please contact us:

Website: <https://www.hashherbcafe.co.za>

Email: hello@hashherbcafe.co.za

Phone: +27 63 814 7295

Address: 15 Galaxy Road, Linbro Business Park, Johannesburg, 2065, South Africa

This document is for informational purposes only. Specifications subject to change without notice.

