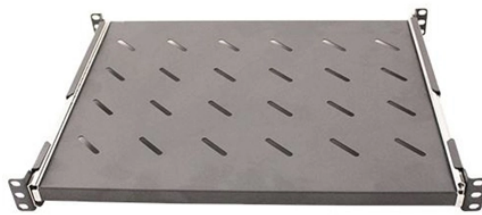


SA-400G Optical Module



SA-400G Optical Module



The 400G optical module is an optoelectronic conversion module with a transmission rate of micro-400G. It uses advanced PAM4 optical port modulation technology to achieve high-speed and low ...



Based on an oDSP and optical components with the highest performance, the 400G MSA module delivers the optimal performance for 400G long-haul transmissions, and a flexible 200–800G DWDM ...



A 400G optical transceiver is a hot-swappable module that sits in a switch, router, or NIC and converts high-speed electrical signals to light (and back again) so traffic can travel over fibre.



To address these demands, operators are increasingly adopting 400G optical modules—compact, pluggable transceivers capable of delivering up to 400 Gbps per port.



The primary role of 400G optical modules is to increase data throughput, maximizing bandwidth and port density in data centers. Future trends for 400G optical modules include broad ...



A clear, engineer-friendly overview of 400G optical modules, including standards, packaging formats, functions, and market outlook for next-generation data centers.



Discover the evolution from 400G to 800G and 1.6T optical modules. Learn key technologies, CPO vs pluggable, and upgrade strategies for future-ready data centers.



Qualified for use across Juniper's 400GbE-capable ACX, MX, PTX, and QFX product families, Juniper offers a broad portfolio of 400G coherent and direct-detect optical transceivers to address the ...



An LPO module which exceeds the operating range requirement while meeting all other optical specifications is considered compliant (e.g., operating at 600 m meets the operating range ...



Today, we have provided a definitive overview of the transmission standards for 400G optical modules. We are confident that this article will assist you in selecting the optimal standard.

Contact Us

For more information, pricing, or custom network solutions, please contact us:

Website: <https://www.hashherbcafe.co.za>

Email: hello@hashherbcafe.co.za

Phone: +27 63 814 7295

Address: 15 Galaxy Road, Linbro Business Park, Johannesburg, 2065, South Africa

This document is for informational purposes only. Specifications subject to change without notice.

