

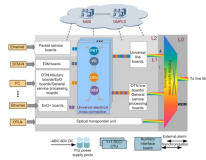
Router red light indicates normal fiber optic connection



Overview

Normally provided on optical network terminals (ONT), this red light indicates that the unit is not receiving a signal from your fiber internet provider's Passive Optical Network (PON). Here are a couple of quick and easy things to try if your modem, ONT, router, or gateway isn't. Whether your modem is blinking orange, your router has a solid red light, or you are staring at a mysterious "DS" indicator, you will find the answer below. Blinking green typically means data. A red light on your router can be a source of frustration and confusion. Fortunately, diagnosing and resolving these issues doesn't have to be complicated. However, when it blinks red or stays solid red, it signifies a Loss of Signal, a problem preventing your router from communicating. The tables in this article provide detailed information about the possible appearances of the LED lights on each device, the possible causes of each state, and what you should do.

Router red light indicates normal fiber optic connection



This guide will walk you through what the LOS light means, why it blinks red and step-by-step instructions on how to resolve the issue, including resetting your router.



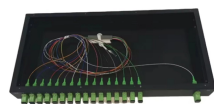
How to Fix Red Light on My Router A red light on your router can be a source of frustration and confusion. It often indicates that something is wrong with your internet connection or ...



A red or blinking PON light almost always indicates a physical issue with the fiber cable: a bend, a break, a disconnected connector, or debris on the optical connector face.



A red light on a router usually means the device has lost its internet connection or is experiencing a hardware issue. First, check whether your modem is also showing abnormal lights.



Ensure your Fiber Jack is connected to the network and the LED lights are connected and working properly before moving on to troubleshoot your router. Likewise, your router will have to be ...



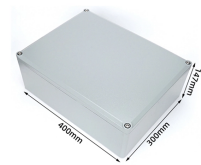
A red light on your modem typically means it can't detect an internet signal and can't connect. To fix this issue, you'll need to go through several troubleshooting steps.



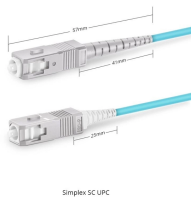
Experiencing a solid red broadband light on your router can be frustrating and indicates a disruption in your internet connection. Understanding the possible causes and fixes for this issue is ...



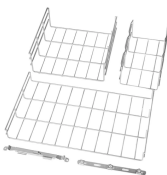
Why are your modem and router lights blinking? Learn the common causes, what each light means, and easy fixes to quickly get your internet connection back.



This guide will walk you through what the LOS light means, why it blinks red and step-by-step instructions on how to resolve the issue, including ...



Red or Amber: No connection to the internet is detected, which could indicate an issue with the ISP or a misconfiguration of the router's WAN settings. Try restarting the router and ...



Normally provided on optical network terminals (ONT), this red light indicates that the unit is not receiving a signal from your fiber internet provider's Passive Optical Network (PON).

Contact Us

For more information, pricing, or custom network solutions, please contact us:

Website: <https://www.hashherbcafe.co.za>

Email: hello@hashherbcafe.co.za

Phone: +27 63 814 7295

Address: 15 Galaxy Road, Linbro Business Park, Johannesburg, 2065, South Africa

This document is for informational purposes only. Specifications subject to change without notice.

