

## Router modified into core switch



### Overview

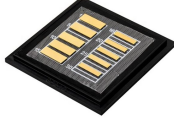
Includes dual power supplies, hot-swappable modules, link aggregation (LAG), and support for HSRP/VRRP. Modular chassis or stackable designs make it easy to scale as your network grows. 1X support, SNMP, CLI/Web GUI, and network access control. These devices provide the switching rates, routing, high availability and more that you need in your core and they also give you the ability to add future network services such as firewalling, IPS, load-balancing, etc. Mselmi, Which Cisco router that supposes switching at the core layer would you. Internet routing via core switch instead of routers?

We're upgrading our internet connection from a single leased line (1gb) + VDSL backup. This service is essentially provided to us as a single CAT5 cable from a Cisco router that handles the failover to VDSL (public IP failover too). Engineered to aggregate massive volumes of data from distribution switches, it provides ultra-low latency and maximum throughput to ensure uninterrupted routing and packet. A core switch is the backbone of a large-scale network, designed to handle massive volumes of traffic with ultra-low latency and maximum reliability. Here is how I envision this working. What

does a switch do?

Connect more devices.

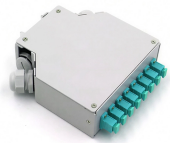
## Router modified into core switch



Core switches handle the high-speed switching of data within the LAN, whereas core routers are responsible for routing data between different networks, such as connecting LANs to the ...



In my research I'm getting mixed suggestions - Some say that core switches are for routing, when others say that core switches have to be as fast as possible and have minimal tasks dedicated to them.



In case of problems in a certain switch between core switch and dual aggregation switch, three-layer routing equipment and virtual gateway can be quickly switched to realize redundant backup of dual ...



The 3845 will be providing internet access to our core. The main purpose of this network is to provide transit and customer based services, so there is no firewall in line with the core switch.



A core switch enables high performance by defining the routes of data packets. Not only is defining routes sufficient, but traffic monitoring is essential to improving performance.



This guide breaks down exactly what a core switch does, how it fits into the three-tier network model, and the exact device-count thresholds that dictate when your business actually ...



A Core switch has layer 3 capabilities and therefore does routing of packets like Routers within VLANs in a campus LAN. The routing capability of core switches is hardware base (best) while ...



Unlike access switches, which connect directly to end-user devices, the core switch focuses on aggregating and routing traffic between other switches, minimizing latency and ...



Explore what a core switch does, why it's essential for enterprise networks, and how to choose the right model. Includes real-world applications and Cisco/Huawei/Aruba model comparison.



Internet routing via core switch instead of routers? We're upgrading our internet connection from a single leased line (1gb) + VDSL backup. This service is essentially provided to us as a single CAT5 cable ...

## Contact Us

For more information, pricing, or custom network solutions, please contact us:

Website: <https://www.hashherbcafe.co.za>

Email: [hello@hashherbcafe.co.za](mailto:hello@hashherbcafe.co.za)

Phone: +27 63 814 7295

Address: 15 Galaxy Road, Linbro Business Park, Johannesburg, 2065, South Africa

This document is for informational purposes only. Specifications subject to change without notice.

