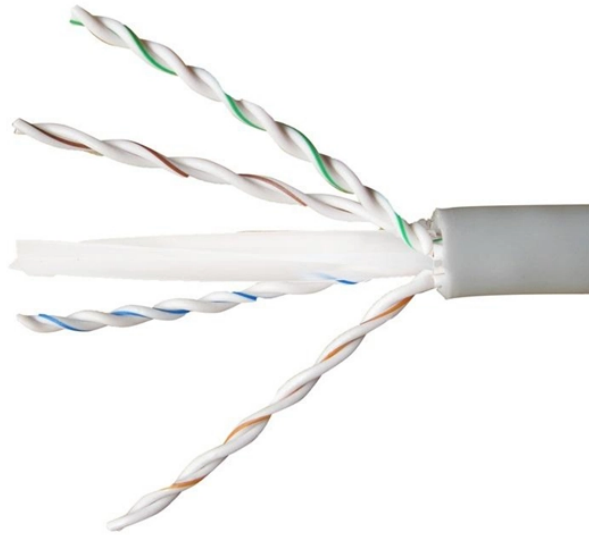


# **Romanian Fireproof Cable Tray Connection Methods**



## Romanian Fireproof Cable Tray Connection Methods



The RKS-Magic® cable tray can be mounted under the ceiling or on the wall with brackets. The brackets are additionally secured on the ceiling with a threaded rod to prevent them from bending in a fire.



Fields of application pillow for walls and floors. It is designed for use with cables, cable trays and plastic pipes



This document outlines the method statement for installing cable trays, ladders, and perforated cables. It details the purpose, references, responsible parties, equipment, installation process, tools, and ...



3M Fire Barrier Moldable Putty+ is a one-part, halogen-free product designed to firestop electrical outlet boxes and a wide variety of through-penetrations including cable, conduit, insulated pipe and metal ...



Tested and Verified Fire Safety Meka Pro regularly tests the fire resistance of its products to ensure high-quality and safe cable management systems. The products are tested extensively and using ...



During this phase, it is important to design cable entry methods to buildings in the hazardous zones, with vapor-tight barriers between them and non-hazardous locations.



Cable tray installation must comply with specific technical standards to ensure electrical safety, system reliability, and long-term maintainability. This document ...



Cable trays and busways at floor level or at slab penetrations shall have a waterstop no less than 50 mm in height. At slab penetrations, provide 20-30 mm of firestopping and install a fire ...



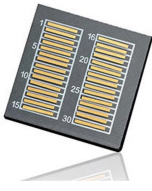
Our solutions are designed to prevent flame propagation and enable speedy fire-fighting operations. Our cable fire protection solutions ensure that cables remain functional even in case of fire, enabling ...



Cable tray installation must comply with specific technical standards to ensure electrical safety, system reliability, and long-term maintainability. This document outlines the key requirements for cable tray ...



Cable trays and busways at floor level or at slab penetrations shall have a waterstop no less than 50 mm in height. At slab penetrations, provide ...



NEMA VE 1-2017 Specifies requirements for metal cable trays and associated fittings designed for use in accordance with the rules of Canadian Electrical Code, Part I and the National Electrical Code®

## Contact Us

For more information, pricing, or custom network solutions, please contact us:

Website: <https://www.hashherbcafe.co.za>

Email: [hello@hashherbcafe.co.za](mailto:hello@hashherbcafe.co.za)

Phone: +27 63 814 7295

Address: 15 Galaxy Road, Linbro Business Park, Johannesburg, 2065, South Africa

This document is for informational purposes only. Specifications subject to change without notice.

