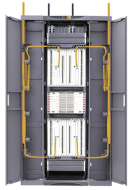


Ring Network Fiber Optic Terminal Box



Ring Network Fiber Optic Terminal Box



It is available for the distribution and terminal connection of various kinds of optical fiber system. These units are available in sizes that fit the most ...



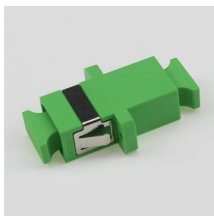
Fiber optic termination boxes provide a secure and organized solution for protecting and distributing fiber connections in FTTH, FTTB, and small network deployments. Designed as a compact enclosure, ...



Learn everything about fiber termination boxes—types, installation steps, and maintenance tips to ensure reliable fiber optic network performance.



Discover how to select the best fiber optic terminal box for data centers, campus fiber backbones, outdoor FTTH networks, and enterprise fiber systems. Learn how environment, capacity, ...



CommScope wall boxes offer efficient fiber connectivity. Easy installation, versatile sizes, and superior cable management.



An OptiTap compatible MST (Multi-port Service Terminal) box is a ruggedized outdoor fiber optic enclosure manufactured by a third party. It features female bulkhead adapter ports ...



This kind of subscriber optical fiber access terminal box from NEATEL company is used to build FTTH smart network. It is designed for in-line application to provide a protected access point between the ...



Multilink wall mount fiber distribution boxes include solutions for patch cable interconnection or a combination of splicing and patching. We separate these products into multiple groups based on ...



6-Core FTTH Fiber Distribution Termination Box with 6 SC Adapters, IP65 Waterproof, Wall-Mount Enclosure for Residential/Commercial Fiber Optic Splicing & Management (with 6 SC Adapter)



Learn how to design a fiber optic ring network with practical diagrams, topologies, and switch setup tips. Explore ring network switch options for industrial applications.

Contact Us

For more information, pricing, or custom network solutions, please contact us:

Website: <https://www.hashherbcafe.co.za>

Email: hello@hashherbcafe.co.za

Phone: +27 63 814 7295

Address: 15 Galaxy Road, Linbro Business Park, Johannesburg, 2065, South Africa

This document is for informational purposes only. Specifications subject to change without notice.

