

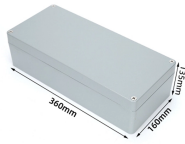
Ribbon Optical Cable Fusion Splicing Operation Procedures



Ribbon Optical Cable Fusion Splicing Operation Procedures



In this video, we showcase the complete ribbon splicing process from start to finish, highlighting the speed, precision, and ease of use of the Fujikura 90R.



In this guide, we cover the basics of fiber optic splicing, how to perform splicing using two different methods, and finally some best practices to perform good fiber splicing.



The methods below are designed to allow mass fusion splicing, using readily available equipment, without changing splice attenuation or adding complexity to the splicing process.



Learn how to splice fiber optic cable using fusion splicing with this complete step-by-step guide. Includes tools, best practices, loss standards (ITU-T G.652), cost analysis, and FAQs for ...



Fusion splicing may be done one fiber at a time or a complete fiber ribbon from ribbon cable at one time. First we'll look at single fiber splicing and then ribbon splicing.



Since mass fusion splicing is designed to be used with ribbon or ribbonized fiber cable, it is first necessary to construct ribbons out of loose tube fibers. You can construct ribbonized fiber in a few ...



This is a demonstration video of mass fusion splicing, using 12-fiber FREEFORM RIBBON™ by Sumitomo Electric.



Ribbon cable can be spliced more rapidly by using mass fusion splicing technique. This application note provides basic understanding and process of mass fusion splicing of optical fiber ribbons.



Learn Fiber Optic Fusion Splicing: step-by-step guide to safe, precise fiber prep, fusion, and testing for low-loss, high-quality splices in optic networks.



The purpose of this document is to describe the advantages of field-splicing SM/MM single core & /or 12-ribbon fibers, demonstration of fusion splicing, and how using Panduit products can help.



Fiber Optic Cables - Ribbon Fusion Splicing This virtual hands-on page will take you through the steps involved in the process. Look at the slide graphics and then read the notes below. The notes explain ...

Contact Us

For more information, pricing, or custom network solutions, please contact us:

Website: <https://www.hashherbcafe.co.za>

Email: hello@hashherbcafe.co.za

Phone: +27 63 814 7295

Address: 15 Galaxy Road, Linbro Business Park, Johannesburg, 2065, South Africa

This document is for informational purposes only. Specifications subject to change without notice.

