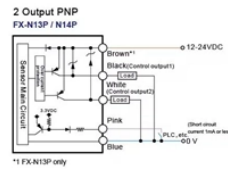
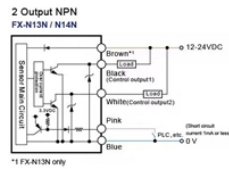


Review of Power Relay Protection



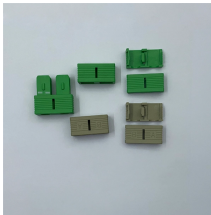
Review of Power Relay Protection



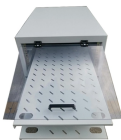
Protective relaying is an integral part of any electrical power system. The fundamental objective of system protection is to quickly isolate a problem so that the unaffected portions of a system can ...



As the protected components of the electrical systems have changed in size, configuration and their critical roles in the power system supply, some protection aspects need to be revisited (i.e. the use of ...



The experimental results show that this method can effectively analyze the operation characteristics of power system relay protection, and can accurately check whether the relay ...



What is a Protection Relay? An electrical device designed to detect some specified condition in a power system, and then command a circuit breaker either to trip or to close in order to protect the integrity ...



Protective relays are essential in power systems to detect faults, isolate problem areas, and prevent widespread damage. Their use spans high-voltage transmission, industrial machinery, ...



Explore the latest trends in relay protection, including innovations in relay test set technology, the shift to digital relays, and tools like the secondary injection test set. Learn how these ...



Learn about protective relays, their working principle, types, and applications in power systems. Discover how relays protect transformers, generators, and transmission lines from faults.



These are just a few examples of primary protection relays, and many more specialized relays exist to address specific protection needs in power systems. Each relay plays a critical role in safeguarding ...



The main objective was to investigate the protection of power transformer from internal faults and prevent any interference with the power system. Several plausible fault scenarios were...



The study aims to provide an in-depth exploration of the value of relay protection technologies in modern power systems and to offer references for related research and practical ...



What is a Protection Relay? An electrical device designed to detect some specified condition in a power system, and then command a circuit breaker either to trip or ...

Contact Us

For more information, pricing, or custom network solutions, please contact us:

Website: <https://www.hashherbcafe.co.za>

Email: hello@hashherbcafe.co.za

Phone: +27 63 814 7295

Address: 15 Galaxy Road, Linbro Business Park, Johannesburg, 2065, South Africa

This document is for informational purposes only. Specifications subject to change without notice.

