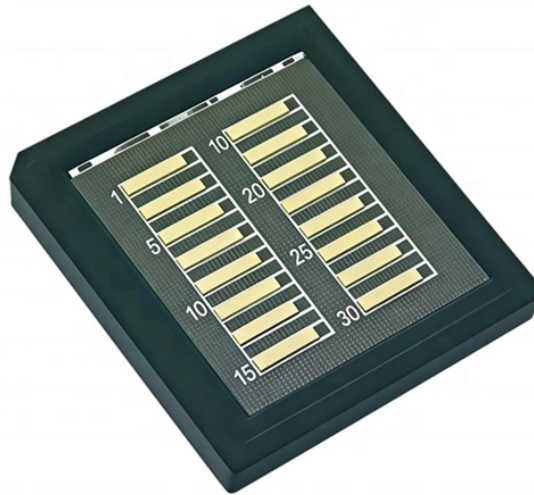


## Results of relay protection



### Overview

A protective relay is an automatic device that detects abnormalities in an electrical circuit and closes its contacts. This action completes the circuit breaker's trip coil circuit, causing the breaker to trip and disconnect the faulty section from the healthy circuit. The first protective relays were electromagnetic devices, relying on coils operating on moving parts to provide detection of abnormal operating conditions such as. The objective of this presentation is to convey a basic understanding of protective relays to an audience of engineers already familiar with low voltage protective device coordination. Fundamental concepts and terminology will be taught using the electromechanical overcurrent relay as a foundation. Relay protection systems are essential in maintaining the safety and reliability of modern electrical grids. Long term cost reduction (TCO) for trainings and maintenance by reduce variety of relays A fast and selective arc fault mitigation for air-insulated LV & MV switchgear and Relion protection and control relays and sensor.

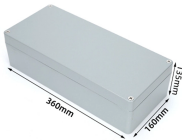
## Results of relay protection



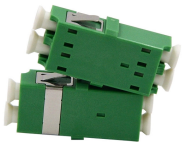
Learn about protective relays, their working principle, types, and applications in power systems. Discover how relays protect transformers, generators, and transmission lines from faults.



This paper introduces the concept of relay protection of hidden faults, its characteristics, and then analyzes the detection, risk and the calculation method of the relay protection of...



This article verified the effectiveness of the knowledge base based relay protection fault handling process in improving the safety, stability, and fault handling efficiency of power systems through ...



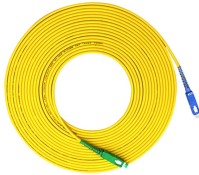
Relion protection and control relays for several application reduce complexity. Long term cost reduction (TCO) for trainings and maintenance by reduce variety of relays.



Protective relays and devices have been developed over 100 years ago to provide “lastline” of defense for the electrical systems. They are intended to quickly identify a fault and isolate it so the balance of ...



Explore the latest trends in relay protection, including innovations in relay test set technology, the shift to digital relays, and tools like the secondary injection test set. Learn how these ...



Types of protection relays are mainly based on their characteristic, logic, on actuating parameter and operation mechanism. Protective relays can be categorized based on their operating ...



The experimental results show that this method can effectively analyze the operation characteristics of power system relay protection, and can accurately check whether the relay ...



Microprocessor-based solid-state digital protection relays now emulate the original devices, as well as providing types of protection and supervision impractical with electromechanical relays.



Traditionally, protective relays were electromechanical devices that utilized induction disk, coils, contacts, and solenoid elements to determine protective characteristics.



Feb 24, 2012· Types of protection relays are mainly based on their characteristic, logic, on actuating parameter and operation mechanism. Protective ...

## Contact Us

For more information, pricing, or custom network solutions, please contact us:

Website: <https://www.hashherbcafe.co.za>

Email: [hello@hashherbcafe.co.za](mailto:hello@hashherbcafe.co.za)

Phone: +27 63 814 7295

Address: 15 Galaxy Road, Linbro Business Park, Johannesburg, 2065, South Africa

This document is for informational purposes only. Specifications subject to change without notice.

