

Requirements for wiring in construction site distribution boxes



Overview

Learn what OSHA requires for temporary wiring on construction sites, from grounding and GFCI protection to overhead clearances and employer liability. In this guide, we'll break down everything you need to know to install a distribution box correctly and confidently. Choose the right box based on environment (indoor/outdoor), load capacity, and durability. The conductors shall be run as multiconductor cord or cable assemblies or within raceways; or, where not subject to physical damage, they may be run as open conductors on insulators not more than 10 feet (3. Branch circuits shall. work requires electrical power for many purposes. However, exposure to weather, frequent relocation, rough use and other conditions not normally encountered with conventional wiring systems necessitate special consideration not require in other applications or in completed structures.

Requirements for wiring in construction site distribution boxes



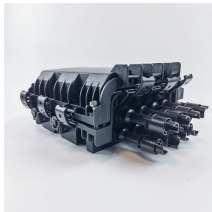
work requires electrical power for many purposes. However, exposure to weather, frequent relocation, rough use and other conditions not normally encountered with conventional wiring systems ...



This paragraph covers the installation of portable wiring and equipment, including wiring in or on all structures, for carnivals, circuses, exhibitions, fairs, traveling attractions, and similar events.



A box shall be used wherever a change is made to a raceway system or a cable system which is metal clad or metal sheathed.



Distribution boxes are used for power distribution, circuit protection and cable management, while junction boxes are only used for wire connection and branching.



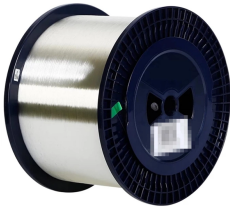
Such requirements include specific rooms/areas where conduit risers can be run, ceiling areas where conduit cannot be run, etc. These notes are to provide guidelines to the contractor for determining ...



It includes construction requirements as well as drawings showing several acceptable arrangements for one and two-line installations. DTE must first review and approve shop drawings of equipment prior ...



The requirements of Article 590 apply to temporary power and lighting installations and removals, including power for construction, remodeling, maintenance, repair, demolition, and decorative lighting.



By following the guidelines in this article and working with reliable suppliers such as Chuanli, the safety, reliability, and compliance of electrical distribution boxes or distribution boxes ...



Learn what OSHA requires for temporary wiring on construction sites, from grounding and GFCI protection to overhead clearances and employer liability.



Learn how to install a distribution box safely and correctly. Covers wiring, placement, standards, and expert tips for a compliant setup.

Contact Us

For more information, pricing, or custom network solutions, please contact us:

Website: <https://www.hashherbcafe.co.za>

Email: hello@hashherbcafe.co.za

Phone: +27 63 814 7295

Address: 15 Galaxy Road, Linbro Business Park, Johannesburg, 2065, South Africa

This document is for informational purposes only. Specifications subject to change without notice.

