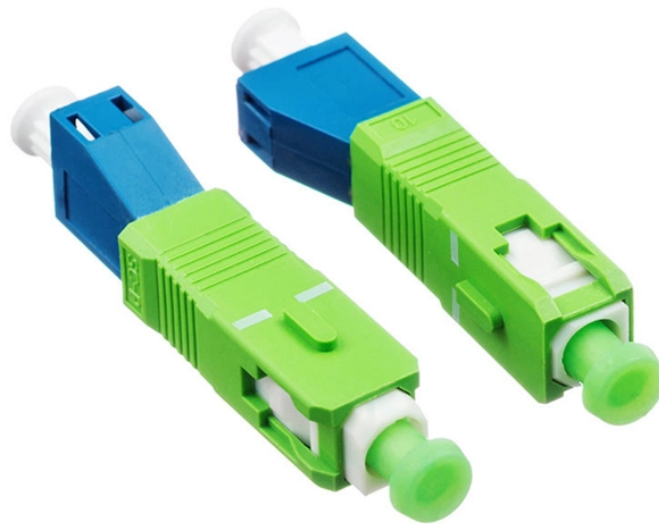


Requirements for installing explosion-proof distribution boxes



Overview

When installing and wiring an explosion-proof distribution box, it is essential to follow strict safety protocols and national electrical standards (e., IEC, NEC, or local safety regulations). It is important to. Unlike standard distribution boxes that could become shrapnel shards in volatile environments, explosion-proof containers are engineered fortresses that absorb, contain, and vent catastrophic blasts without becoming fragmentation bombs themselves. (b) Short-circuit protection shall be provided for each branch circuit connected to a distribution box. Division classifications further refine the hazard level.



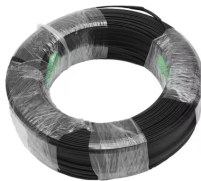
Requirements for installing explosion-proof distribution boxes



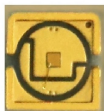
This article will focus on the definition, applicable environment, installation specifications and standards, and precautions of "secondary explosion-proof distribution box", and comprehensively analyze its ...



Understand the 7 critical NEC requirements for electrical installations in hazardous locations to ensure safety compliance and protect your operations.



This article discusses requirements for companies and installers when designing and installing electrical systems in hazardous areas.



§ 18.42 Explosion-proof distribution boxes. (a) A cable passing through an outside wall (s) of a distribution box shall be conducted either through a packing gland or an interlocked plug and ...



Explosion-proof boxes aren't metal containers - they're integrated life-preservation systems requiring holistic design, precision installation, and continuous vigilance.



By following these guidelines, the installation and operation of explosion-proof equipment can be made safer, more efficient, and compliant with industry standards.



Regularly inspect the explosion-proof distribution box for any damage to components. The installation inclination of the distribution box should not exceed 5 degrees.



§ 18.42 Explosion-proof distribution boxes. (a) A cable passing through an outside wall (s) of a distribution box shall be conducted either through a packing gland or an interlocked plug and ...



The installation of explosion-proof distribution boxes should follow specific explosion-proof grades and material requirements to ensure their safety ...



When installing and wiring an explosion-proof distribution box, it is essential to follow strict safety protocols and national electrical standards (e.g., IEC, NEC, or local safety regulations). Below are ...



The installation of explosion-proof distribution boxes should follow specific explosion-proof grades and material requirements to ensure their safety and reliability.



When installing and wiring an explosion-proof distribution box, it is essential to follow strict safety protocols and national electrical standards (e.g., IEC, NEC, or local ...

Contact Us

For more information, pricing, or custom network solutions, please contact us:

Website: <https://www.hashherbcafe.co.za>

Email: hello@hashherbcafe.co.za

Phone: +27 63 814 7295

Address: 15 Galaxy Road, Linbro Business Park, Johannesburg, 2065, South Africa

This document is for informational purposes only. Specifications subject to change without notice.

