

Requirements for Post-Maintenance of Distribution Boxes



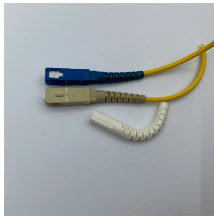
Overview

Refer to Section 3 of TD-2302P-05, “Electric Distribution Maintenance Requirements for Miscellaneous Overhead and Underground Equipment” for details on reporting and documentation requirements. ” Annual preventive maintenance for Bay Area Rapid Transit (BART) cable assets, as applicable for each division. Distribution assets. Visual Inspection: Seeing What Others Miss Before touching anything, use your eyes. Look for: Burn marks or discoloration (that ugly brown or black tint that screams "I overheated!") 2. Connection Tightening: The Power of the Right Grip Those vibrations you feel when a pump starts?

Over months. Appropriate locations for installation should be verified with local Postmasters. Customer obligations are as follows: In locations where door delivery has been authorized, customers must provide either house-mounted boxes that provide adequate protection and security for the mail and that are. Maintain Low Voltage Distribution Boxes with regular inspection, cleaning, and preventive care to ensure safety, reliability, and longer service life. Regular care. In an effort to gain this consistency, Dominion Energy

Virginia and Dominion Energy North Carolina (the "Company") in addition to the Terms and Conditions on file with the appropriate Commission, has established requirements for electrical contractors, engineers, architects, developers, builders. Between 5 and 10 arc flash incidents occur every single day in the United States — and the total financial impact of a single event can reach up to \$15 million when you account for medical costs, equipment replacement, legal liability, and lost production. A structured electrical panel and power.

Requirements for Post-Maintenance of Distribution Boxes



From circuit breakers to transformers, switches, & cables, this checklist lets you identify and rectify faults before they cause downtime or safety issues. Your electrical distribution systems ...



This book contains requirements that are based on many years of experience and were developed to meet system safety and efficiency needs while offering reasonable convenience to Customers.



Your Complete Maintenance Checklist Okay, let's get practical. Here's your step-by-step guide to keeping distribution boxes safe and functional. Grab your flashlight and tools—we're going in!



re•quire•ment (rɪ'kwɪər mənt) n. 1. something required. 2. an act or instance of requiring. 3. a need or necessity: the requirements of daily life.



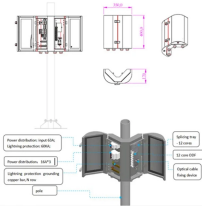
Requirements can be imposed by an authority. For example, in college, it is usually a requirement that you study math, English, and history, before you go on to get your degree in underwater basket ...



To ensure the long-term stable operation of complete sets of distribution cabinet control boxes, regular maintenance and servicing are required. Specifically, this includes: Cleaning the surface and interior ...



This article provides a detailed overview of the entire process of installing a distribution box, from pre-installation preparation to post-installation maintenance, and summarizes common ...



All safety codes, safety standards and/or regulations must be strictly observed in the installation, operation and maintenance of this equipment. Only authorized personnel should be allowed to work ...



This manual is for electronic distribution only and is designed to provide you with the most current information on the Los Angeles Department of Water and Power's (Department) service equipment ...



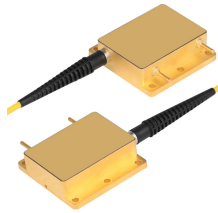
This post discusses electrical distribution system maintenance planning using economic and reliability factors. In particular, an integrated ...



Requirements can be imposed by an authority. For example, in college, it is usually a requirement that you study math, English, and history, before you go on to get your degree in underwater basket ...



The maintenance process requires regular inspection of the enclosure, stainless steel contacts, and electrical connections, using visual inspection and tool ...



A structured electrical panel and power distribution maintenance program is the most direct way to prevent that outcome: the 2023 NFPA 70B standard has now made annual infrared ...



A good degree is a minimum requirement for many jobs. [+ that] It is a legal requirement that you have insurance for your car. Students who fail to meet the requirements (of the course) will fail.



Customer obligations are as follows: In locations where door delivery has been authorized, customers must provide either house-mounted boxes that provide adequate protection and security for the mail ...



He has met the basic/minimum requirements for graduation. She has fulfilled/satisfied the general requirements of the course.



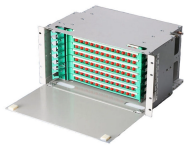
A good degree is a minimum requirement for many jobs. [+ that] It is a legal requirement that you have insurance for your car. Students who fail to meet the requirements (of the course) will fail.



: something required: a : something wanted or needed : necessity production was not sufficient to satisfy military requirements b : something essential to the existence or occurrence of something else : ...



The intent of this manual is to clarify electric service requirements for Pacific Power and Rocky Mountain Power customers prior to and during construction. This manual may require different electrical ...



Regularly inspect Low Voltage Distribution Boxes every three months to catch problems early and avoid costly repairs. Always clean the boxes using safe methods. Turn off power, use dry ...



The school can decide which pupils will be given priority of admission, subject to the requirements of the law. The government has imposed strict safety requirements on fairground rides.



Electric Distribution Maintenance Requirements SUMMARY This utility standard outlines the requirements for safely patrolling, inspecting, assessing, maintaining, repairing, and replacing electric ...



A requirement is something that you must have in order to be allowed to do something or to be suitable for something. These products meet all legal requirements.



With the waterfall model, requirements are completed before design or implementation start. Requirements are used in many engineering fields including engineering design, systems ...

Contact Us

For more information, pricing, or custom network solutions, please contact us:

Website: <https://www.hashherbcafe.co.za>

Email: hello@hashherbcafe.co.za

Phone: +27 63 814 7295

Address: 15 Galaxy Road, Linbro Business Park, Johannesburg, 2065, South Africa

This document is for informational purposes only. Specifications subject to change without notice.

