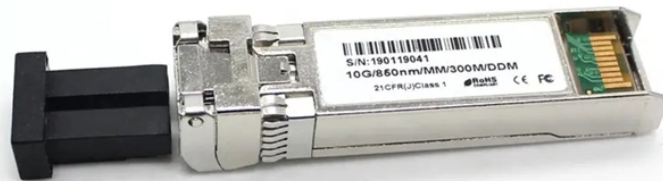


Requirements for Outdoor Installation of Network Distribution Boxes



Overview

NEC Requirements for Outdoor Distribution Boxes: Complete specification guide for outdoor electrical distribution boxes covering NEC Article 312 requirements, NEMA ratings, sizing calculations, and selection criteria for commercial and residential applications. □□ Specification Insight: NEC 312. If it's done poorly, you risk short circuits, fire hazards, or system failure. Done right, it ensures safety, compliance, and long-lasting performance. In this guide, we'll break down everything you need to know to install. Receptacles must be weather-resistant (WR-rated) and installed in weatherproof enclosures. "Getting your distribution box installation right isn't just about passing inspection - it's about. outdoor junction box should be made of high-quality cold-rolled steel plate, and the thickness of the iron plate of weather proof box should be greater than 1. Its primary function is to shield devices such as Power over Ethernet (PoE) injectors, small network switches, media.

Requirements for Outdoor Installation of Network Distribution Boxes



Learn how to install a distribution box safely and correctly. Covers wiring, placement, standards, and expert tips for a compliant setup.



outdoor junction box should be made of high-quality cold-rolled steel plate, and the thickness of the iron plate of weather proof box should be greater than 1.5mm; the electrical ...



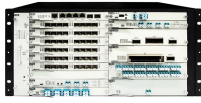
The National Electrical Code (NEC) provides essential rules for setting up outdoor circuits and equipment safely. Outdoor wiring requires careful attention to prevent moisture and corrosion, ...



Outdoor wiring faces harsher conditions than indoor installations as it is exposed to moisture, sunlight, and mechanical damage. Below is a comprehensive guide to NEC rules for ...



Choose the ideal outdoor Ethernet box by matching environmental ratings (IP/NEMA) to your location, then ensure flawless mounting and weather sealing.



The enclosure shall be suitable for Outdoor installation. The enclosure shall be made from cold rolled sheet steel of thickness 3.15 mm and shall be suitable to withstand rough usage and weather.



This specification guide provides system designers, electrical engineers, and procurement professionals with the technical criteria needed to select compliant outdoor electrical ...



The latest NEC updates prioritize adaptive solutions for modern energy demands. With homes now packing solar arrays, EV chargers, and smart-home systems, distribution boxes work harder than ...



Consult the Clearview Blue Cassette Installation Manual for splicing instructions, located under the Resources tab of the Clearfield website,



Outdoor wiring faces harsher conditions than indoor installations as it is exposed to moisture, sunlight, and mechanical damage. Below is a comprehensive guide to NEC rules for ...



Low voltage distribution box outdoor use requires IP65 or NEMA 4X ratings, corrosion-resistant materials, and proper sealing for lasting weather protection.

Contact Us

For more information, pricing, or custom network solutions, please contact us:

Website: <https://www.hashherbcafe.co.za>

Email: hello@hashherbcafe.co.za

Phone: +27 63 814 7295

Address: 15 Galaxy Road, Linbro Business Park, Johannesburg, 2065, South Africa

This document is for informational purposes only. Specifications subject to change without notice.

