

Requirements for Explosion-proof Distribution Boxes in Factory Workshops



Overview

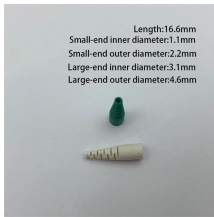
Explosion-proof equipment must be certified and come with an official certificate issued by the National Explosion-Proof Electrical Product Quality Supervision and Inspection Center. The Electronic Code of Federal Regulations (eCFR) is a. Certification standards like ATEX, IECEx, and NEC Class I/II Division standards require explosion-proof enclosures to: "We've analyzed hundreds of explosion sites where 'certified' equipment failed. In every case, installation shortcomings were the root cause – not manufacturing defects. All accessories, spare parts, and technical documentation should be complete and available for reference. What Is An Explosion Proof Box or Enclosure?

They are a cast aluminum or iron box that can withstand a heavy-duty explosion. Explosion-proof and flameproof equipment is essential for safe operation in hazardous (classified) locations where flammable gases, vapors, or combustible dusts may be present.) Enclosure: 304 stainless steel, 316L stainless steel and Q235.

Requirements for Explosion-proof Distribution Boxes in Factory Work



Measures: In order to ensure safe use, lighting explosion-proof distribution boxes (boards) are required not to be made of flammable materials. Even in dry, dust-free places, wooden explosion-proof ...



§ 18.42 Explosion-proof distribution boxes. (a) A cable passing through an outside wall (s) of a distribution box shall be conducted either through a packing gland or an interlocked plug and ...



Explosion-proof distribution boxes are suitable for use in explosive gas environments classified as Zone 1 and Zone 2. They can be used in Type IIA, IIB, and IIC hazardous locations, and are compatible ...



Practical guide to explosion-proof and flameproof equipment in hazardous locations: principles, markings, installation, cable entries, inspection, and best practices for explosive ...



In summary, these five points are essential in the installation process of explosion-proof power distribution boxes, including the installation of surge protectors, ammeters, and voltmeters. ...



§ 18.42 Explosion-proof distribution boxes. (a) A cable passing through an outside wall (s) of a distribution box shall be conducted either through a packing gland or an interlocked plug and ...



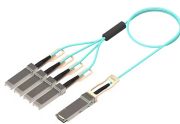
This article discusses requirements for companies and installers when designing and installing electrical systems in hazardous areas.



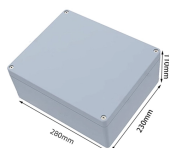
Since the requirements of every industrial facility and the intensity of hazardous locations vary, different strategies are adopted to develop the design ...



·Equipped with specialized hinge structure, which can prevent the flameproof joints from damage when opening and closing the box, and greatly prolong the service life of box. The boxes can be combined ...



Explosion-proof boxes aren't metal containers - they're integrated life-preservation systems requiring holistic design, precision installation, and continuous vigilance.



Since the requirements of every industrial facility and the intensity of hazardous locations vary, different strategies are adopted to develop the design for these enclosures and storage boxes. Below are ...

Contact Us

For more information, pricing, or custom network solutions, please contact us:

Website: <https://www.hashherbcafe.co.za>

Email: hello@hashherbcafe.co.za

Phone: +27 63 814 7295

Address: 15 Galaxy Road, Linbro Business Park, Johannesburg, 2065, South Africa

This document is for informational purposes only. Specifications subject to change without notice.

