

Requirements for Customized Non-Standard Distribution Boxes



Requirements for Customized Non-Standard Distribution Boxes



Your cables must be considered as carefully as your boxes—both are vital components of a reliable distribution network. This integration becomes especially critical when implementing electrical ...



(3) Support Fittings Fill. Where one or more luminaire studs or hickey are present in the box, a single volume allowance in accordance with Table 314.16(B) shall be made for each type of fitting based on ...



Define what a customized power distribution cabinet is and describe the distribution box from the manufacturer's perspective.



Design requirements for low voltage distribution boxes cover NEC, IEC, and safety standards to ensure reliable, compliant electrical installations.



Our certifications and standards cover junction and pull boxes, cabinets and cutout boxes, industrial control panel enclosures, IP and IK rated electrical enclosures, ...



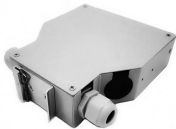
In addition, the distribution cabinet shall have the characteristics of anti vibration, impact resistance, corrosion resistance, antifouling, moisture-proof and electromagnetic radiation, so as to ensure the ...



Our certifications and standards cover junction and pull boxes, cabinets and cutout boxes, industrial control panel enclosures, IP and IK rated electrical enclosures, and enclosure accessories. ...



Section includes specific requirements, products, and methods of execution relating to conduit, conduit fittings, surface raceways, multi-outlet assemblies, wireways, outlet boxes, pull boxes and junction ...



Discover how E-Abel customizes electrical distribution boxes to meet unique requirements for industrial, commercial, and residential applications. Learn about our design, ...



Design requirements for low voltage distribution boxes cover NEC, IEC, and safety standards to ensure reliable, compliant electrical installations.



Choose from robust metal distribution boxes made of stainless steel, steel, or aluminum, tailored with surface treatments to resist corrosion and meet waterproof requirements.



Complete specification guide for outdoor electrical distribution boxes covering NEC Article 312 requirements, NEMA ratings, sizing calculations, and selection criteria for commercial and ...

Contact Us

For more information, pricing, or custom network solutions, please contact us:

Website: <https://www.hashherbcafe.co.za>

Email: hello@hashherbcafe.co.za

Phone: +27 63 814 7295

Address: 15 Galaxy Road, Linbro Business Park, Johannesburg, 2065, South Africa

This document is for informational purposes only. Specifications subject to change without notice.

