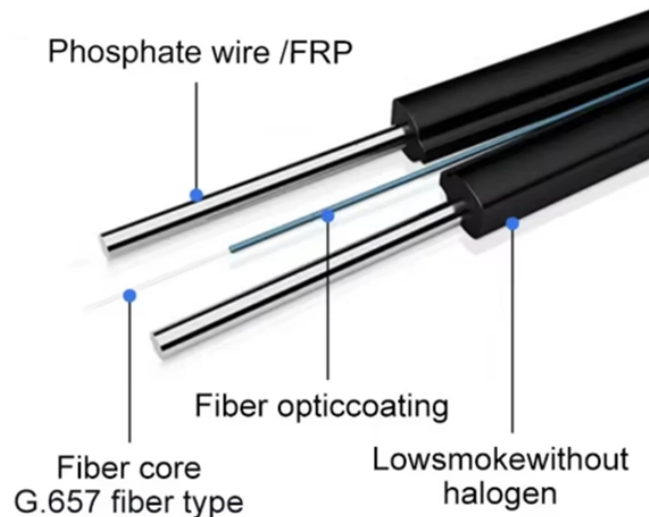


Remove the cover from the distribution box



Overview

Homeowners should not remove the cover from an electrical panel - it is unsafe to do so. This article discusses hazards that can be spotted at the electrical panel before even touching it and. However, with a few simple steps, you can open an outdoor electrical box safely and efficiently. The service panel is where the utility's power enters your home, and sections of it are constantly exposed to dangerous quantities of voltage. When you remove the panel cover. How do you remove the power distribution box cover on a 1997 Ford F150?

Upload your school material for a more relevant answer Remove the power distribution box cover of a 1997 Ford F150 by parking your truck securely and turning off the engine, opening the hood, disconnecting the car battery. A Square D breaker box, often referred to as a load center, serves as the central distribution point for electrical power within a home.

Remove the cover from the distribution box



With the cover supported, fully remove the last two screws and gently pull the dead front straight away from the enclosure. The cover may be stiff or tightly fitted, so ensure no internal wiring is snagged or ...



To get access to the circuit breakers inside the panel box, you have to remove the panel cover. It is a simple task and can be done easily using either a screwdriver or a cordless drill with ...



What You'll Need
Turning Off The Main Breaker
Testing For Power
Removing The Breaker
Now for the actual part of the removal of the breaker, you have to turn off the branch breaker. Please keep your rubber gloves and boots on at all times to avoid any electrical hazards. Below are the steps on how to remove a circuit breaker from a panel box. See more on wiring solver

Missing: distribution box
Must include: distribution box

```
.b_wpt_bl .b_tranthis{margin-left:8px;font-size:14px}.b_algo .b_tranthis{margin-top:1px;margin-left:8px}.b_algo .b_attribution:has(.c_tlbxTrg) .b_tranthis{margin-left:2px}.b_tranthis:hover{text-decoration:underline}.b_tranthis{color:var(--smtc-ctrl-link-foreground-brand-rest);z-index:1;position:relative}.b_dark .b_tranthis{color:#82c7ff}#b_content .b_wpt_container .tpmeta .b_attribution:has(.b_tranthis){display:flex;overflow:hidden;align-items:baseline}#b_content .b_wpt_container .b_attribution:has(.b_tranthis) span.b_tranthis{flex-shrink:0}#b_content .b_wpt_container .b_attribution:has(.b_tranthis) span{flex-shrink:1;overflow:hidden;text-overflow:ellipsis;white-space:nowrap}.sb_doct_txt{color:#4007a2;font-size:11px;line-height:21px;margin-right:3px;vertical-align:super}.b_dark .sb_doct_txt{color:#82c7ff}
```

eaton Translate this result



If the distribution box has multiple outlets, adjust each one independently. If a single outlet services more than one loader, adjust setting using loader that is located furthest from the distribution box.



Remove flush trim from the packaging (see Figure C). Locate the flush right flange in the trim carton. Using the saved 7/16" hex nuts, securely attach the right-hand flush trim flange to the box studs ...



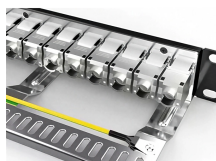
There are a lot of inherent risks when you take off a panel cover because you don't know what's behind it. Removing the cover exposes energized parts and conductors, posing a serious risk ...



Septic system distribution box lid replacement. Electronic underground locating. On site wastewater.



Homeowners should not remove the cover from an electrical panel - it is unsafe to do so. [Click to enlarge any image] Homeowners should look at their electrical equipment for signs of trouble and ...



Now that the power is off, you can loosen the screws that hold the box together and remove the cover. Inside you'll find the electrical components, such as the wiring, breakers, and ...



Remove the cover, then before you go any further test the incoming cable at the incomer side of the main switch to establish that it is dead. If you are simply working on a single circuit from a local DB, ...



Open the hood. The power distribution box is located near the battery on the driver side of the vehicle. Disconnect the negative (-) terminal of your car battery for safety. To remove the cover ...

Contact Us

For more information, pricing, or custom network solutions, please contact us:

Website: <https://www.hashherbcafe.co.za>

Email: hello@hashherbcafe.co.za

Phone: +27 63 814 7295

Address: 15 Galaxy Road, Linbro Business Park, Johannesburg, 2065, South Africa

This document is for informational purposes only. Specifications subject to change without notice.

