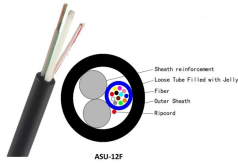


Rectifier Module Distribution Box



Rectifier Module Distribution Box



Learn what an electrical distribution box (DB/distribution board) is, its main components (MCB/RCCB/RCBO, SPD, busbar) and common types. Includes a quick selection guide for ways, IP ...



Cordex 250W modular systems range from a 1.25kW bulk power 19in shelf with CXCI to a 1kW fully integrated 19in shelf power system with CXCI controller and bullet breaker distribution module. The ...



These versatile Rectifier Modules function as either power supplies or battery chargers for 12, 24 or 48 volt systems; positive, negative or floating ground. They ...



This rack mounted DC power distribution unit PDU rectifier module operates at high efficiency and is capable of a maximum DC power output of 1,200 W. Refer to the datasheet for the parent rack ...



Explore scalable rectifier shelf systems designed for seamless power distribution, energy efficiency, and optimal performance.



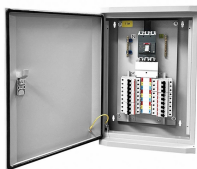
Product Summary: 1pc Brushless Generator Diode Rectifier Bridge Module MXGMXY70A-12 Distribution Box Wiring Row Sit Stable Bridge Group From DIGFNMY



Cordex 650W modular shelf systems are available to fit various 48Vdc application needs. 19in rear access solutions are available in a five-module (3.2kW) bulk output version as well as a four-module ...



These versatile Rectifier Modules function as either power supplies or battery chargers for 12, 24 or 48 volt systems; positive, negative or floating ground. They may be employed singly or in combination, ...



This system consists of a 1U carrier with up to five rectifier modules (48V-800 SE) plus the battery protection and load distribution unit 4000 SE. Larger capacities up to 6000W (SMS 6000 SE) are ...



Each rectifier module is designed to limit the power output to the module specification. This enables more current to be supplied at lower output voltages, and allows matching the output power to the ...



Certain functions (i.e. rectifier current limit, rectifier addressing) may require adjustment when adding or replacing a rectifier . Refer to the Power System documentation for instructions.

Contact Us

For more information, pricing, or custom network solutions, please contact us:

Website: <https://www.hashherbcafe.co.za>

Email: hello@hashherbcafe.co.za

Phone: +27 63 814 7295

Address: 15 Galaxy Road, Linbro Business Park, Johannesburg, 2065, South Africa

This document is for informational purposes only. Specifications subject to change without notice.

