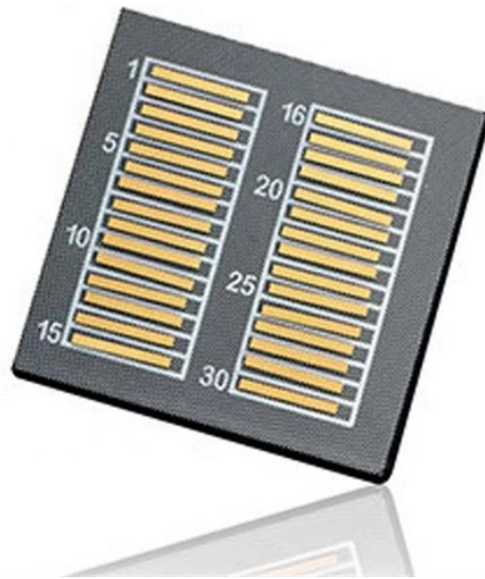


Rectangular High Voltage Switch Copper Busbar



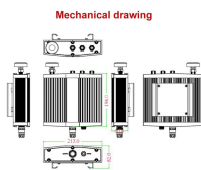
Rectangular High Voltage Switch Copper Busbar



Knowing the ampacity, designers and estimators can get the approximate bus bar size. Ampacity of the bus bar selected must then be verified by checking table 1.



Produced from high-purity copper grades such as ETP and DHP, these busbars deliver excellent electrical performance with low resistive losses, making them ideal for power panels, switchgear ...



Our copper bus bar is designed for electrical applications and installations, fully compliant with ASTM B187.



Busbars are metal bars that can be composed of numerous alloys but are most commonly copper or aluminum. Typical busbar applications include switchgear, panel boards, power invertors, powered ...



Our most conductive metal for electrical applications—all with material certificates for traceability. Choose from our selection of copper bus bars, including over 650 products in a wide range of styles ...

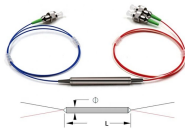


Molex provides a versatile range of high-current high-voltage busbar solutions suitable for various applications and environments.

Rear of the optical fiber distribution box



Find reliable copper bus bars for electrical connectivity and power distribution. Choose from various sizes, materials, and configurations to suit your needs.



These copper busbars can be surface-treated with plating and insulation, providing strong mechanical strength for high-load power connections. Easy to install and space-efficient, they reduce installation ...



To connect various high voltage (HV) components to the HV system, we also deliver a wide variety of busbars. In cooperation with the customer, these can also feature our Bus Bar Insulation Tubing (BBIT).



Bare Copper Busbar is a high-conductivity, solid copper conductor used in electrical distribution, grounding, and power systems. Available in flat, rectangular, round, and custom shapes, ...

Contact Us

For more information, pricing, or custom network solutions, please contact us:

Website: <https://www.hashherbcafe.co.za>

Email: hello@hashherbcafe.co.za

Phone: +27 63 814 7295

Address: 15 Galaxy Road, Linbro Business Park, Johannesburg, 2065, South Africa

This document is for informational purposes only. Specifications subject to change without notice.

