

Recommended Jamaican Zinc-Aluminum-Magnesium Cable Trays



Recommended Jamaican Zinc-Aluminum-Magnesium Cable Trays



Solid bottom trough cable tray – Provides maximum protection from falling objects, dust and dripping liquids. Often specified for sensitive control cables and data cables.



We, the renowned Electrical Cable Trays Manufacturer and Supplier in Jamaica, use premium materials like galvanized steel, stainless steel, and fiberglass to manufacture our cable trays. We ensure our ...



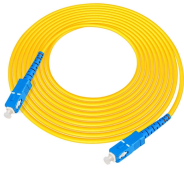
The Cable Tray System is equipped with side return flanges and designed to eliminate any sharp edges. This cable tray system incorporates slot patterns, enabling efficient equipment placement and ...



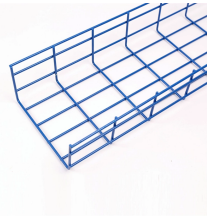
Powder coating wire mesh cable tray dimensions are all inner size. It is constructed with a 100*50, 50mm x 50mm mesh grid. When installed, it should be supported at a normal span of 1.5m by ...



****Zinc-Aluminium-Magnesium cable trays**** emerge as a game-changer, designed to withstand the rigors of modern electrical applications. This comprehensive guide explores the ...



Fabricated in numerous styles (wiremesh, ladder, ventilated trough, channel, and solid-bottom) and sizes, cable tray provides the greatest versatility among cable support systems, while offering ...



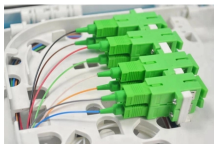
The Cable Tray System is equipped with side return flanges and designed to ...



This article will explore the definition, key features, production process, and applications of Zinc-Aluminum-Magnesium Cable Tray, along with a comparison to traditional cable tray solutions.



The rise of zinc-aluminum-magnesium cable trays stems from their innovative ternary alloy coating technology. Unlike traditional pure zinc coatings, this coating comprises zinc (Zn), aluminum (Al), and ...



A corrosion-resistant cable support system manufactured from steel substrate with advanced Zn-Al-Mg alloy coating. Standard configurations include ladder-type, tray-type, and ...



****Zinc Aluminum Magnesium (ZAM) cable trays**** are emerging as a superior choice for managing electrical cables. These innovative trays not only support the organization of cables but ...

Contact Us

For more information, pricing, or custom network solutions, please contact us:

Website: <https://www.hashherbcafe.co.za>

Email: hello@hashherbcafe.co.za

Phone: +27 63 814 7295

Address: 15 Galaxy Road, Linbro Business Park, Johannesburg, 2065, South Africa

This document is for informational purposes only. Specifications subject to change without notice.

