

Reboot the core switch by unplugging and reconnecting it



Overview

Reboot the switch via the management console's boot system command. Rebooting a Cisco switch is essential for troubleshooting and maintenance; this article details the different methods available, from graceful reloads to power cycling, ensuring optimal network performance. Understanding how to reboot a Cisco switch correctly prevents data loss and minimizes. This article provides a comprehensive guide to rebooting Cisco switches, covering best practices, troubleshooting, and post-reboot configuration. Command-Line Interface (CLI) Reboot 2. We also include important tips that will help ensure you avoid common problems and mistakes during the removal procedure. Press the Reset button on the front of the switch. If I unplug the same cable from the other side (i.

Reboot the core switch by unplugging and reconnecting it



Power Cycle: The simplest method is to simply unplug the switch from its power source for a few seconds and then plug it back in. This is the equivalent of a hard reset.



The objective of this article is to show you how to perform a reboot or factory reset on a Catalyst 1200 or 1300 switch.



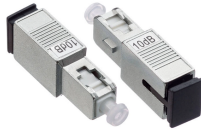
While seemingly straightforward, a proper reboot procedure can minimize downtime and prevent potential network disruptions. This article provides a comprehensive guide to rebooting Cisco ...



This guide provides detailed steps for rebooting essential network devices, including modems, routers, switches, and phones. Following the correct order is crucial for ensuring a smooth and successful ...



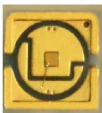
Is this a known issue? Is there a fix for this so I don't have to walk out to my garage everytime I reboot my MacBook? (FYI: all the other cables plugged into the same switch seem unaffected, i.e., they are ...



The easiest way to reset the switch to its factory default settings is to look for its reset button located on the front panel, then press and hold for more than 10 seconds.



The safest and preferred way to reboot a Cisco switch is by using the CLI (Command Line Interface) with the reload command after saving the configuration. This method ensures a ...



This article explains the procedure that should be followed to correctly shutdown/powerdown a Cisco Nexus 7000 series module and remove it from the ...



To reset a switch, try any of the following: Unplug and plug in the power cord (power cycling). Press the Reset button on the front of the switch. Reboot the switch via the management console's boot ...



Whether you're managing a single 2960 in a branch office or redundant 9500s in a data center, understanding how and when to execute that reboot command for your Cisco switch ...



This article explains the procedure that should be followed to correctly shutdown/powerdown a Cisco Nexus 7000 series module and remove it from the chassis. We also ...

Contact Us

For more information, pricing, or custom network solutions, please contact us:

Website: <https://www.hashherbcafe.co.za>

Email: hello@hashherbcafe.co.za

Phone: +27 63 814 7295

Address: 15 Galaxy Road, Linbro Business Park, Johannesburg, 2065, South Africa

This document is for informational purposes only. Specifications subject to change without notice.

