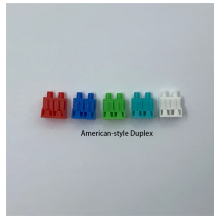


## Reasons for rework in cable tray installation



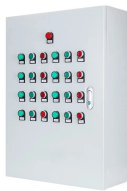
## Reasons for rework in cable tray installation



Prior to installing cable in the tray or ladder, examine the cable paths to ensure all areas are free of debris that may interfere with the cable's installation.



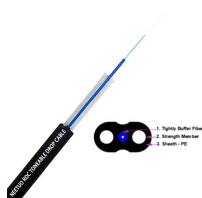
This procedure includes pre-installation preparation, material verification, layout inspection, and final testing, ensuring reliable and efficient ...



This document lists the most typical mistakes that EPC teams should not make while installing instrumentation cable trays to make sure the plant runs smoothly, is safe, and is in ...



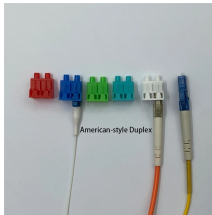
Reuse of trays may not be convenient in brownfield installations because if you break a circuit while pulling cable, then there is uncalled-for downtime. The other considerations for wiring are ...



This guide covers the critical steps, from selecting the right electrical cable tray and performing accurate cable fill calculations to managing a safe cable pull through and ensuring all bonding and grounding ...



7.6 Cable ties will be applied to cables in horizontal tray sections at each horizontal change of direction, within two rungs A(.,each direction. After cables have been tied down, any cables violating ...



When cable trays are fitted well, it makes looking after them much easier. For example, if you make sure there is easy access during fitting, people ...



Should any condition be found which will prevent the proper execution of the work, installation shall not proceed in that area until such conditions are corrected by the contractor.



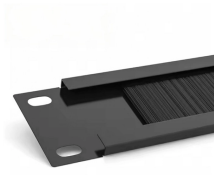
Cable tray layout must take into consideration the design limits of the cable. To minimize damage and verify integrity after installation, follow the practices outlined in cable handling and ...



NEC Article 392 explains cable trays, their components, appropriate wiring methods for cable trays, and instances where they are and are not permitted for use. It also focuses on ...



Ensuring a reserve margin in cable tray sizing is crucial to accommodate future expansions and prevent cable bunching, which can lead to overheating and ...



Using cable trays as walkways can cause personal injury and can damage cable trays and installed cables.



Should any condition be found which will prevent the proper execution of the work, installation shall not proceed in that area until such ...



Using cable trays as walkways can cause personal injury and also damage cable tray and installed cables. Hazardous voltages in electrical equipment can cause severe personal injury or death. ...



Trays shall be stored on flat surfaces with adequate support, off the ground, in a dry, shaded area. Accessories shall be stored in labeled containers or shelves for easy identification and access. ...

## Contact Us

For more information, pricing, or custom network solutions, please contact us:

Website: <https://www.hashherbcafe.co.za>

Email: [hello@hashherbcafe.co.za](mailto:hello@hashherbcafe.co.za)

Phone: +27 63 814 7295

Address: 15 Galaxy Road, Linbro Business Park, Johannesburg, 2065, South Africa

This document is for informational purposes only. Specifications subject to change without notice.

