

Railway Optical Cable 027



Railway Optical Cable 027



The tops of all supply cables shall be located below the base of the lowest rail at a depth of not less than 30 inches, in the case of street railroads, and not less than 42 inches, in the case of other railroads.



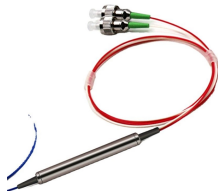
Prysmian has developed new cable designs and materials that provide enhanced resistance to chemicals and mechanical stress, improved fire safety, and enhanced electromagnetic compatibility ...



Cables from 1 to 25 quads of 0.9 or 1.4 mm, polyethylene insulated. Quads are stranded in layers to form the core which is then protected by an anti inductive sheath with reduction factor 0,3.



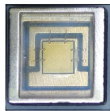
High-voltage power cables play a crucial role in supplying electricity to electric trains, while signaling cables ensure the safety of train operations. Additionally, optical cables for data communication ...



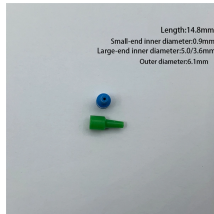
ST2513/CT2243 Outdoor Single Mode Unarmoured Trackside Optical Fiber Cables CT2242 Outdoor Single Mode Armoured Trackside Optical Fiber Cables Telecommunication Cables for Indoor Plant ...



Explore railroad cable assemblies for signal, power, and communication systems—engineered for safety, ruggedness, and compliance in rail applications.



A continuous monitor providing permanent communication between the train driver's cab and the railway control center is essential for a railway line to be used safely.



Also for railway applications cables need to be designed and developed both for guaranteeing passive safety (non-propagation of fire, low smoke emission, absence of toxic gases - LSZH) and for the ...



Shop RDSO-approved 6F, 12F, 24F & 48F armored optical fiber cables on best prices for railway and telecom networks. High durability, low attenuation, and compliant with IRS:TC 55-2006 standards.



ACOME proposes many ranges of copper and optical cables for railway signal and communication cables

Contact Us

For more information, pricing, or custom network solutions, please contact us:

Website: <https://www.hashherbcafe.co.za>

Email: hello@hashherbcafe.co.za

Phone: +27 63 814 7295

Address: 15 Galaxy Road, Linbro Business Park, Johannesburg, 2065, South Africa

This document is for informational purposes only. Specifications subject to change without notice.

