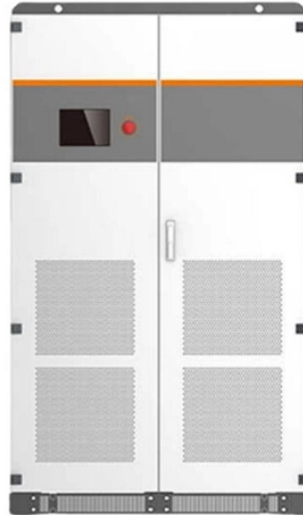


QSFP28 Low Power Optical Module



QSFP28 Low Power Optical Module



Discover FS's QSFP28 100G LR4 optical transceiver, offering low power consumption, perfect compatibility, and reliable long-distance performance ...



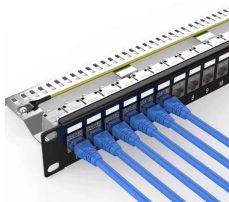
Buy 100G QSFP28 Optical Transceiver Modules by Amphenol XGIGA Factory-Direct at Cables on Demand in 100GBASE-SR4 (Short-Range Multimode) and 100GBASE-LR1 (Long-Range Single ...



FTLC1154RDPL QSFP28 transceiver modules are designed for ...



The modules offer full MSA compliance and support 100G data transmissions with low power consumption and industry-leading optical specifications. 100G QSFP28 optics are an excellent ...



It is a small form factor, high speed, and low power consumption product, targeted for use in optical interconnects for data communications applications. The high bandwidth module supports 100GbE ...



The Cisco QSFP28 to SFP28 Adapter (QSA) Module offers 25, 10 and 1 Gigabit Ethernet Connectivity for QSFP 100G ports. The adapter gives customers flexibility to upgrade to 100GE ...



FTLC1154RDPL QSFP28 transceiver modules are designed for use in 100 Gigabit Ethernet links on up to 10km of single mode fiber. They are compliant with the QSFP28 MSA, IEEE 802.3ba 100GBASE ...



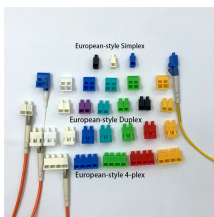
The MTRQ-1LA01 Transceiver is a high performance, cost effective module for serial optical data communication applications to 106.25Gbps. The MTRQ-1LA01 transceiver is designed to use in 100 ...



The 100G QSFP28 optical module is suitable for 100G Ethernet, EDR Infiniband and 32G fibre channel. Generally, its size and panel density are the same as 40G QSFP+.



Amphenol's 100G QSFP28 optical modules include SR4, AOC, AOC break out, CWDM4, LR4, ER4 Lite, ER4 and ZR4 series, which adopt LC or MPO optical ports



PAM4 QSFP28 - Cost-effective for high-density DCI and enterprise networks with lower power consumption ensuring wider switch compatibility.
 ZR4 QSFP28 - Supports distances up to 80 km, ...

Contact Us

For more information, pricing, or custom network solutions, please contact us:

Website: <https://www.hashherbcafe.co.za>

Email: hello@hashherbcafe.co.za

Phone: +27 63 814 7295

Address: 15 Galaxy Road, Linbro Business Park, Johannesburg, 2065, South Africa

This document is for informational purposes only. Specifications subject to change without notice.

