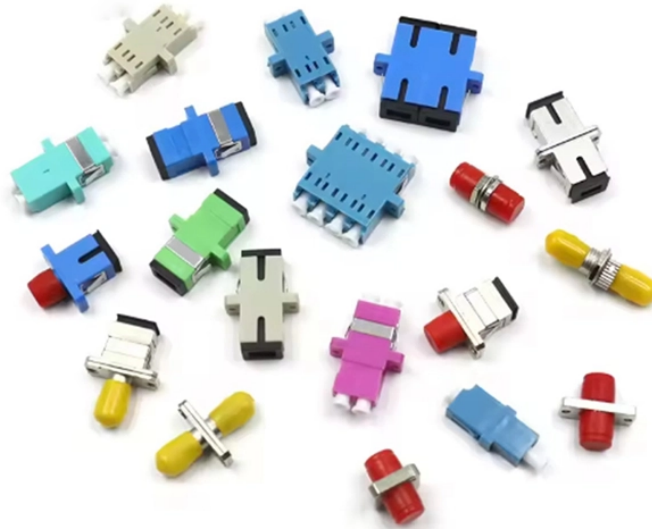


Project Quotation 24-core optical fiber cable for long-distance cable



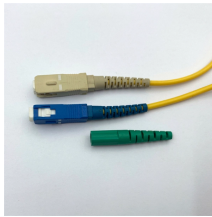
Project Quotation 24-core optical fiber cable for long-distance cable



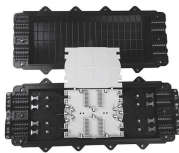
Built to IRS:TC 55-2006 Rev.1 and RDSO/SPN/TC/110/2020 Rev.0 standards, it features 24 single-mode fibers, corrugated steel armor, and UV-resistant HDPE sheath. Designed for underground ...



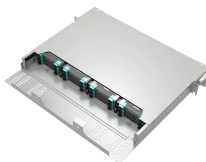
24 Core GYTY53 fiber optic cable is used for direct buried underground, it suit for long distance and LAN fiber communications, we supply both the single mode GYTY53 cable and multimode GYTY53 cables.



When evaluating the 24 core fiber optic cable price per meter, buyers should consider not just the upfront cost but also long-term reliability, maintenance needs, and total cost of ownership.



Discover 24 core fiber optic cable for FTTH & aerial use. CE/ROHS certified, G652D/G657A2 fibers, armored outdoor durability.



Discover the cost of fiber optic cable in this pricing guide. Learn material prices, installation factors, and what impacts total project costs overall.



Discover precision-engineered 24 core fiber optic cables featuring advanced optical fiber technology, robust materials, and optimal performance. Perfect for telecom and industrial networks. Competitive ...



24 Core GYTY53 fiber optic cable is used for direct buried underground, it suit for ...



Main cost drivers include cable grade (indoor vs outdoor, armoured), distance, and labor for trenching, splicing, and termination. This guide presents ranges in USD and practical price ...



This guide outlines the major factors that influence fiber optic cable costs and provides practical tips for estimating pricing in bulk or project-based scenarios.



This is a black 1000 foot spool of indoor/outdoor rated Corning fiber optic distribution cable intended for long distance runs at high speeds. It is composed of 24 singlemode fibers (9 micron core) inside a ...



The Fiber Cabling Project Cost Estimator below will give you an instant, general estimate for your fiber network cabling project. Call 800-614-4560 or contact us here if you need help with this.

Contact Us

For more information, pricing, or custom network solutions, please contact us:

Website: <https://www.hashherbcafe.co.za>

Email: hello@hashherbcafe.co.za

Phone: +27 63 814 7295

Address: 15 Galaxy Road, Linbro Business Park, Johannesburg, 2065, South Africa

This document is for informational purposes only. Specifications subject to change without notice.

