

## Professional Manufacturer of Aluminum Alloy Cable Trays



## Professional Manufacturer of Aluminum Alloy Cable Trays



Our Aluminum Alloy Cable Tray is developed in-house with reference to the NEMA VE1-1979 Cable Tray Systems standard. Designed with simplicity and durability in mind, it offers outstanding corrosion ...



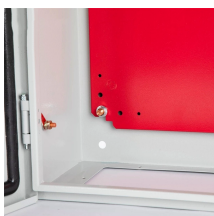
Atkore's US Tray was established in 2012, as an American manufacturer of made-to-order cable trays that are built per NEMA standards and certified by UL. We offer modern, innovative, and technically ...



Search for best Aluminium Cable Trays manufacturers, Powerack provide high quality Aluminium Cable Trays, please contact us.



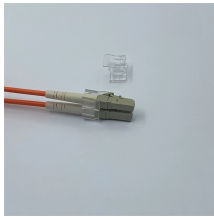
The Aluminum Cable Ladder has a high loading capacity to manage dense cable transitions. Designed with a lightweight structural design, easy installation, and long-lasting corrosion resistance, the ...



PowerTray is a versatile Aluminum Ladder Tray system available in a broad range of NEMA and CSA Load classes. A full line of accessories, covers, and radius fittings are available including “snap-in” ...



The Aluminum Cable Ladder has a high loading capacity to manage dense cable transitions. Designed with a lightweight structural design, easy installation, and long-lasting corrosion resistance, the ...



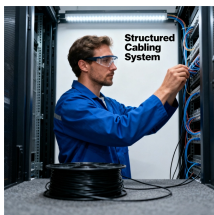
As a less-expensive alternative to conduit, a stronger alternative than wire basket, and superior to generic tray, Snap Track saves on labor and reduces total installed costs.



Aluminum Cable Tray systems are lighter than steel cable tray and Certified CSA Cable Tray, UL listed, NEMA and certified. Because of their lighter weight aluminum cable trays are easier to install than ...



Custom manufacturer of cable trays made from aluminum, fiberglass reinforced plastic (FRP), galvanized and stainless steel materials. Suitable for supporting insulated electrical cables.



Snake Tray offers Aluminum Cable Trays to accommodate our customer's needs for larger cable trays. Aluminum Cable Trays are a light weight for easier installation while offering a high loading capacity ...

## Contact Us

For more information, pricing, or custom network solutions, please contact us:

Website: <https://www.hashherbcafe.co.za>

Email: [hello@hashherbcafe.co.za](mailto:hello@hashherbcafe.co.za)

Phone: +27 63 814 7295

Address: 15 Galaxy Road, Linbro Business Park, Johannesburg, 2065, South Africa

This document is for informational purposes only. Specifications subject to change without notice.

