

Principle of Fiber Optic Extension Coupler



Overview

The most common operating principle of a directional fiber coupler is evanescent wave coupling in a configuration where two fiber cores come close to each other. It functions by dividing a single incoming light path into multiple outgoing paths, or by combining light from several input paths into a single output fiber. The working principle of. This tab provides a brief explanation of how we determine several key specifications for our 1x2 couplers. 1x2 couplers are manufactured using the same process as our 2x2 fiber optic couplers, except the second input port is internally terminated using a proprietary method that minimizes back. Optical fiber coupler (Coupler), also known as splitter (Splitter), connector, adapter, flange, is an electrical-optical-electrical conversion device that transmits electrical signals with light as a medium, and is used to realize optical signal split/comboination.

Principle of Fiber Optic Extension Coupler



Tapered optical fiber couplers (TOCs) are building blocks in many optical fiber devices. A typical TOC is a 2 × 2 ports fiber device that combines the power from two fibers into a single one, as well as it ...



Optical fiber coupler is a device for detachable (active) connection between optical fiber and optical fiber. It precisely butts the two end faces of optical fiber, so that the light energy output ...



In simple terms, they serve as the "traffic managers" of the light that carries information within the fiber optic network. The working principle of these ...



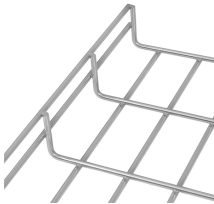
The directivity refers to the fraction of input light that is lost in the internally terminated fiber end within the coupler housing when port 1 is used as the input.



Q: Explain how a fiber optic splitter works. A: A fiber optic splitter takes a single optical signal and splits it into several signals so that light can be fed into numerous output fibers. This is ...



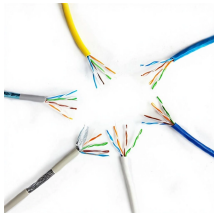
Key questions: What are some common uses of fiber couplers in fiber optics, including fiber lasers? What are dichroic couplers and how are they used in fiber amplifiers? What is the principle of ...



The document outlines the syllabus for a module on fiber couplers and connectors in optical fiber communications, focusing on fiber joint types, optical loss, and splicing techniques. It details both ...



In simple terms, they serve as the "traffic managers" of the light that carries information within the fiber optic network. The working principle of these couplers is based on the phenomena of ...



Connectors are mechanisms or techniques used to join an optical fiber to another fiber or to a fiber optic component. Different connectors with different characteristics, advantages and disadvantages and ...



Fiber optic couplers are optical devices that connect three or more fiber ends, dividing one input between two or more outputs, or combining two or more inputs into one output.



This capability is fundamental to modern fiber-optic systems, allowing complex signal routing without active electronics or external power sources. The coupler's design manipulates the ...

Contact Us

For more information, pricing, or custom network solutions, please contact us:

Website: <https://www.hashherbcafe.co.za>

Email: hello@hashherbcafe.co.za

Phone: +27 63 814 7295

Address: 15 Galaxy Road, Linbro Business Park, Johannesburg, 2065, South Africa

This document is for informational purposes only. Specifications subject to change without notice.

