

## Principle of AT Distribution Box



### Overview

In terms of working principle, electric energy is introduced from the external power supply through the cable into the terminal block, connected to the circuit breaker, and the circuit breaker opens the circuit according to the set rated current. The electric energy flows into the. The distribution box is an electrical equipment with the characteristics of small size, easy installation, special technical performance, fixed position, unique configuration function, no site restrictions, widespread application, stable and reliable operation, high space utilization rate, small. A distribution box, also known as a distribution panel or board, is a cabinet that holds electrical parts used to supply power to multiple circuits within a system. It acts as the central point where electricity distribution is managed inside a building. The box usually contains switches, fuses, or. In any building—whether residential, commercial, or industrial—safe and efficient electricity delivery is essential. As a protective "armor", the shell is mostly made of high-strength engineering plastics or aluminum alloys.

## Principle of AT Distribution Box



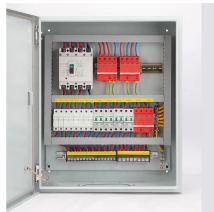
But how does a power distribution box work exactly? In this article, we'll walk you through the step-by-step process of how power flows through a distribution box, what components are involved, and why ...



Just as a heart receives blood and pumps it to various parts of the body, the distribution box receives the main electrical supply and safely distributes it to different circuits throughout your ...



The purpose of the distribution box: rationally distribute electric energy and facilitate the opening and closing operation of the circuit. The safety protection level is high, and the conduction ...



AC distribution boxes are widely used in mobile, microwave, tower base stations and their communication rooms for AC power distribution. Its main function is to connect to the AC grid power ...



Understanding its significance, this article covers what a distribution box is, how it functions, its structure, the various types available, and how it differs from other electrical boxes like ...



Learn about the internal structure of a distribution box, its components, functions, and key types. Understand its role in electrical systems and safety.



At its core, an electrical distribution box (or distribution board) is a metal or plastic enclosure that houses various components responsible for managing and distributing electricity ...



In terms of working principle, electric energy is introduced from the external power supply through the cable into the terminal block, connected to the circuit breaker, and the circuit breaker ...



Working principle of distribution box A distribution box is a low-voltage distribution box composed of switchgear, measuring instruments, protective appliances, and auxiliary equipment ...



At its core, an electrical distribution box (or distribution board) is a metal or plastic enclosure that houses various components responsible for ...



With the help of measuring instruments, various parameters in operation can be displayed, and some electrical parameters can be adjusted to prompt or send signals for deviation ...

## Contact Us

For more information, pricing, or custom network solutions, please contact us:

Website: <https://www.hashherbcafe.co.za>

Email: [hello@hashherbcafe.co.za](mailto:hello@hashherbcafe.co.za)

Phone: +27 63 814 7295

Address: 15 Galaxy Road, Linbro Business Park, Johannesburg, 2065, South Africa

This document is for informational purposes only. Specifications subject to change without notice.

