

# Primary Distribution Box Inspection



## Overview

Examine for any signs of overheating or arcing. Verify that the box is securely mounted and that there are no loose connections. Internal Inspection Open the distribution box and check for dust and debris accumulation. Distribution Maintenance Requirements Overhead and Underground Equipment Miscellaneous This utility procedure classifies maintenance tasks for miscellaneous electric overhead (OH) and underground (UG) equipment, including capacitor banks, fault indicators, interrupters, reclosers, voltage. Check for signs of corrosion or rust. Non-intrusive means the switchboard can monitor and operate the electrical system without directly interference with the electrical wiring. Worker Safety Protocols (Guarding systems, electrical safety gear) Digital Data Management (How errors are tracked/prevented systematically) Loading/Dispatch Operations (Packaging survives real shipping abuse?)

) Let's talk materials – because no amount of clever engineering saves a distribution box. By inspecting and patrolling our distribution lines and facilities, we stand a greater chance of maintaining the system to be able to

deliver safe and reliable service to our customers. Use. A preventive maintenance checklist for electrical distribution systems in commercial buildings typically includes various tasks and inspections to ensure the system's safety and reliability such as: Check for any signs of damage, wear, or overheating in electrical panels, switchgear, transformers.

## Primary Distribution Box Inspection



This preventative maintenance checklist ensures electrical distribution system dependability and safety. From circuit breakers to ...



This preventative maintenance checklist ensures electrical distribution system dependability and safety. From circuit breakers to transformers, switches, & cables, this checklist lets ...



Regular inspection: Visual inspection is carried out monthly or quarterly to check whether the appearance of lines, wiring and equipment is normal. Find problems and fix them in time.



The document provides a 16 item checklist for inspecting a main distribution board or panel board.



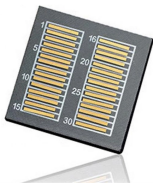
This is the combination of activities consisting of regular inspections, work on mechanisms, and part replacement in electrical distribution equipment. Its goal is to avoid any possible failure (to the best ...



These conditions are identified during patrols and detailed inspections of PG& E's distribution facilities, and may occur as a result of operational use, degradation, deterioration, environmental changes or ...



Check for any signs of damage, wear, or overheating in electrical panels, switchgear, transformers, and other equipment. Look for loose connections, frayed wires, or corroded ...



The document provides a 16 item checklist for inspecting a main ...



4 Distribution equipment located inside a substation follows the same inspection and testing cycle as equipment located outside a substation, using equipment sheets in the relevant procedure.



Today, we'll break down exactly what separates the best from the rest. Forget cookie-cutter checklists - we're talking about the real, practical inspection points that determine whether a ...



Before repairing the distribution box, the installation tools should be checked to ensure that the installation tools are in good condition and avoid danger to the surrounding and human body when ...



Check for any signs of damage, wear, or overheating in electrical panels, switchgear, transformers, and other equipment. Look for loose ...



Inspect for any physical damage to the enclosure. Ensure that all labels and warning signs are legible. Examine for any signs of overheating or arcing. Verify that the box is securely mounted and that ...

## Contact Us

For more information, pricing, or custom network solutions, please contact us:

Website: <https://www.hashherbcafe.co.za>

Email: [hello@hashherbcafe.co.za](mailto:hello@hashherbcafe.co.za)

Phone: +27 63 814 7295

Address: 15 Galaxy Road, Linbro Business Park, Johannesburg, 2065, South Africa

This document is for informational purposes only. Specifications subject to change without notice.

