

Price of installing a network patch panel



Overview

Here's a quick comparison of all 11 patch panels we tested, organized by port count and features. Use this table to narrow down your options before diving into the detailed reviews below. We earn from qualifying purchases. If you're wondering whether you need one for your setup, the short answer is this: a patch panel is a centralized networking device that consolidates multiple Ethernet cables into a single organized interface, making it essential for anyone running more than 4-6 network drops in their home. Please view our full RLH price list and contact us at info@fiberopticlink. The price depends on the type of cabling (Cat5e, Cat6, Cat6a), the level of finish, the complexity of the installation, and any additional components such as patch. Checkout will be available at 5/9/2026, PDT Sat night (in 18hr and 41min) Thank you for your patience while we're closed for Shabbat. This item cannot be canceled or returned. Fully RoHS compliant, no.

Price of installing a network patch panel



Shop patch panels at Infinity Cable Products. Connect your ethernet cables in to one location in your home or business. Our patch panels connect to cables and connectors from Cat5e, Cat6, Cat6A and ...



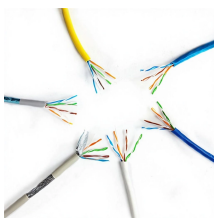
Patch Panels at Office Depot & OfficeMax. Shop today online, in store or buy online and pick up in stores.



Discover the best home network patch panels for 2026 with our expert-tested guide. We compared 11 top-rated models for performance, build quality, and value.



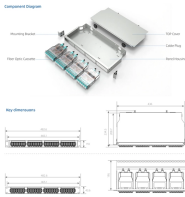
See B& H's vast selection of Network Patch Panels from top brands like TechLogix Networx, TRENDnet, Platinum Tools and Comprehensive, at the best prices.



The Rapink 12 Port Cat6 Network Patch Panel delivers solid performance at an accessible price point. This 1U, 10-inch wallmount unit supports 10 Gbps data transfer speeds and ...



Please view our full RLH price list and contact us at info@fiberopticlink if you have any questions or special project needs.



Larger patch panels with more ports are typically more expensive than smaller ones. For instance, a 24-port patch panel costs between \$50-\$100, while a 48-port patch panel can cost up to \$300. The ...



The price depends on the type of cabling (Cat5e, Cat6, Cat6a), the level of finish, the complexity of the installation, and any additional components such as patch panels, jacks, and faceplates.



Upgrade your network's connectivity with patch panels featuring advanced features like EMI shielding, tool-free module installation, and color-coded labeling.



Looking for a reliable and cost-effective network patch panel? Our partners' sell Cat 6 patch panels, ethernet patch panels and 48 port patch panels.

Contact Us

For more information, pricing, or custom network solutions, please contact us:

Website: <https://www.hashherbcafe.co.za>

Email: hello@hashherbcafe.co.za

Phone: +27 63 814 7295

Address: 15 Galaxy Road, Linbro Business Park, Johannesburg, 2065, South Africa

This document is for informational purposes only. Specifications subject to change without notice.

