

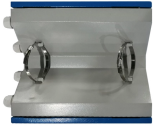
Price of excessive optical cable attenuation



Overview

Use this worksheet to input values for all variables that will impact your system's performance. Active optical cables (AOC) can win when you need more reach than passive copper allows, while transceivers win when you need maximum compatibility across vendors, a broader distance range, and a clear path to mixed media. Engineers often underestimate power. This step is necessary to see if your system falls within. Use proper cable management to avoid excessive bending, which can lead to increased attenuation. Calculate and monitor your fiber optics loss budget to ensure reliable network performance and prevent issues. Since light signals naturally weaken as they travel, this calculated limit ensures the receiving equipment detects the. In fiber networks, attenuation is the gradual reduction of optical signal power as light travels through a cable.

Price of excessive optical cable attenuation



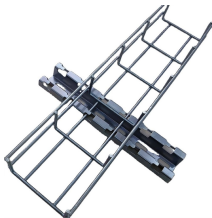
Buyers typically pay for fiber optic cable by length, fiber type, and installation complexity. Main cost drivers include cable grade (indoor vs outdoor, armoured), distance, and labor for ...



While often documented as a technical value in a link budget, attenuation in optical fiber has direct operational and financial consequences over time. In reality, attenuation is also a long-term cost driver.



Fiber optic attenuation weakens signals. Find out causes, loss budget calculation, and solutions to minimize loss for reliable network performance.



Use this handy tool to calculate the loss budget for your next project. The loss budget is the sum of the average losses of all the components, including fiber optic attenuation, connector loss, and splice loss.



Learn how DAC cable, active optical cables, and transceivers compare on price, power, and compatibility, with real deployment pitfalls and a ranking table.



A reliable fiber optic network starts with the link loss budget, a predictive tool for network performance. This budget is the maximum amount of signal power reduction, measured in decibels ...



Corning's link loss budget calculator will calculate your total link loss and tell you if your system falls within Corning's recommended guidelines.



Calculate fiber optic loss budgets with this tool, considering network hardware and dynamic range for optimal performance.



You often face weak signals during fiber optic installations. When attenuation rises, you see reduced data speeds and higher error rates. You fix this by cleaning connectors, checking ...



Learn about fibre optic cabling loss limits & how to calculate them. Gain insights from experts on acceptable loss for cabling projects & explore the standards.

Contact Us

For more information, pricing, or custom network solutions, please contact us:

Website: <https://www.hashherbcafe.co.za>

Email: hello@hashherbcafe.co.za

Phone: +27 63 814 7295

Address: 15 Galaxy Road, Linbro Business Park, Johannesburg, 2065, South Africa

This document is for informational purposes only. Specifications subject to change without notice.

