

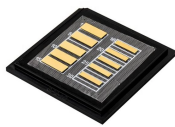
Price of a Simple Busbar Processing Machine



Price of a Simple Busbar Processing Machine



Our Busbar Processing Machine offers exceptional quality and style within the Busbar Machine category. Selecting a busbar machine depends on your required busbar bending capabilities and ...



With 300+ moulds available for customized tooling and a robust painted-steel frame housing hardened dies and punches, this machine is engineered for repetitive, high-volume busbar fabrication.



Choosing the optimal busbar processing machine is a critical decision, demanding a strategic evaluation that balances performance, cost, compliance, and long-term scalability.



The unique SLB 125 3-in-1 busbar center guarantees effortless cutting, punching and bending of copper busbars up to 125 x 13 mm (4" x 1/2"). Ideal for the switchgear work shop or at a site, the base unit ...



Learn hydraulic busbar bending machine price factors, including capacity, tooling, accuracy, maintenance, and long-term production cost.



Whether you need high-precision busbar cutting, punching, or bending functions, or complex pre-assembled mechanisms, our engineers will put your application needs at the core and tailor the best ...



Patented zero-waste technology achieves 100% material utilization, saving \$5,000/month. CNC equipment for bus bar punching, cutting, and bending with an accuracy of $\pm 0.3\text{mm}$.



Discover 3-in-1 busbar processing machines with CNC precision for electrical busbar systems. CE-certified, multifunctional bending, cutting, punching.



Therefore, many manufacturers focus on one critical question: what determines the busbar machine price? The cost of a busbar machine varies according to machine type, automation level, and ...



Search for used busbar processing machine. Find Lijian CNC Machinery, Allen-Bradley, and WNS for sale on Machinio.

Contact Us

For more information, pricing, or custom network solutions, please contact us:

Website: <https://www.hashherbcafe.co.za>

Email: hello@hashherbcafe.co.za

Phone: +27 63 814 7295

Address: 15 Galaxy Road, Linbro Business Park, Johannesburg, 2065, South Africa

This document is for informational purposes only. Specifications subject to change without notice.

