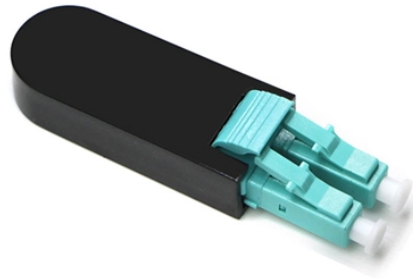


Price list for hot-swappable power distribution unit with immersion liquid cooling



Price list for hot-swappable power distribution unit with immersion



Maximum operational reliability: The integral redundancy options included with Rittal Direct Liquid Cooling keep your systems permanently available. The hot-swap function allows you to replace ...



DCX offers a full range of cost-effective but enterprise-class Coolant Distribution Units (CDUs) for hydro miners and direct liquid cooling systems that support advanced and power-hungry hydro miner models.



Available to cool up to 1,350kW, it's right-sized for liquid-cooled (DLC) data halls. The CDU-1MW operates at elevated water temperatures and narrow approach temperatures, while supporting higher ...



Coolant distribution units, also called cooling distribution units, are devices used in cooling systems to distribute coolant, such as water or other fluids, to different parts of a machine or process that require ...



Excool CDU is designed to meet the evolving demands for HPC cooling, GPU cooling and AI cooling. Our innovative coolant distribution unit provides targeted thermal management for high-density ...



Perfect for new installations and retrofits, the Nortek CDU offers a multitude of differentiators: a wide range of cooling capacity, true built-in redundancy (2N), hot swappable critical components, industry ...



Dive into Liquid Cooling Server solutions, providing efficient thermal management. Ideal for high-performance computing, ensuring optimal operation.



Discover CHx2000, CoolIT's highest-performing CDU. 2000 kW liquid-to-air capacity, hot-swappable pumps, and full monitoring for data centers.



Liquid cooling solutions can provide significantly higher cooling efficiency compared to traditional air-cooling methods. Our hybrid liquid-to-air solutions help customers prepare data centers for next ...



With options ranging from our all-in-one ICeraQ Nano with integrated liquid-to-air heat exchange, compact ICeraQ Micro, the elegant, space-efficient ICeraQ SX, and our modular and flexible ICeraQ ...

Contact Us

For more information, pricing, or custom network solutions, please contact us:

Website: <https://www.hashherbcafe.co.za>

Email: hello@hashherbcafe.co.za

Phone: +27 63 814 7295

Address: 15 Galaxy Road, Linbro Business Park, Johannesburg, 2065, South Africa

This document is for informational purposes only. Specifications subject to change without notice.

