

## Price for closing a residential distribution box



### Overview

The average cost to move an electrical panel ranges from \$1,500 to \$3,500. (subpanel), service upgrade needs, and labor time. The following overview gives practical ranges in USD to help. Buyers typically pay a broad range for replacing a distribution box, driven by box size, amperage, wiring runs, and local labor rates. It safely divides the main power supply into individual circuits that feed power to lights, appliances, and outlets throughout the structure. An electrical meter box houses the utility meter, service disconnects, and conductors in a code-compliant, weatherproof enclosure that forms the.

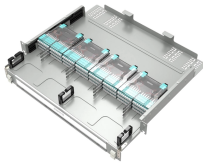
## Price for closing a residential distribution box



Prices for replacing or upgrading an electrical panel box vary based on amperage, existing wiring, location, and permit requirements. The main cost drivers are panel type (main ...



The electric meter box replacement cost ranges from \$200 to \$500 on average and depends on the number of circuits it serves, which can number from 8 to 30. Some are more resilient ...



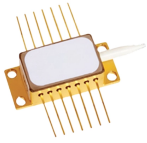
See professionally prepared estimates for electrical box remodeling work. The Homewyse electrical box remodeling calculator uses industry-standard methods and up-to-date cost data to deliver realistic ...



Whatever you're looking for - from 200 amp Square D panels and Leviton's line of smart breaker boxes to quick installation options from Siemens, Eaton commercial-grade value packs, plus GE breakers ...



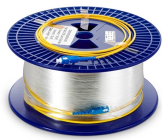
Moving this component is a complex procedure that requires precise planning and execution by a licensed electrician. The national average cost for relocating a residential electrical ...



Discover electrical meter box cost factors with MJBOX. Learn how materials, amp ratings, and IP protection affect pricing for durable, compliant enclosures.



This article outlines the cost factors, price ranges, and practical budgeting advice for a U.S. audience. The price depends on electrical code upgrades, permit needs, and whether upgrades require panel ...



Prices vary by region due to labor rates and permitting complexity. In the Northeast, total costs including permit fees tend to run 5-15% higher than the national average; the Southeast often ...



Costs to move an electrical panel can vary depending on whether you're moving a fuse box, breaker box, or subpanel. The main difference between a fuse box versus a breaker box is that ...



Costs to move an electrical panel can vary depending on whether ...



Permit prices vary depending on the municipality, but they usually range from \$50 to \$350. In many cases, an electrician will obtain the permit for you, but you're still responsible for its cost.

## Contact Us

For more information, pricing, or custom network solutions, please contact us:

Website: <https://www.hashherbcafe.co.za>

Email: [hello@hashherbcafe.co.za](mailto:hello@hashherbcafe.co.za)

Phone: +27 63 814 7295

Address: 15 Galaxy Road, Linbro Business Park, Johannesburg, 2065, South Africa

This document is for informational purposes only. Specifications subject to change without notice.

