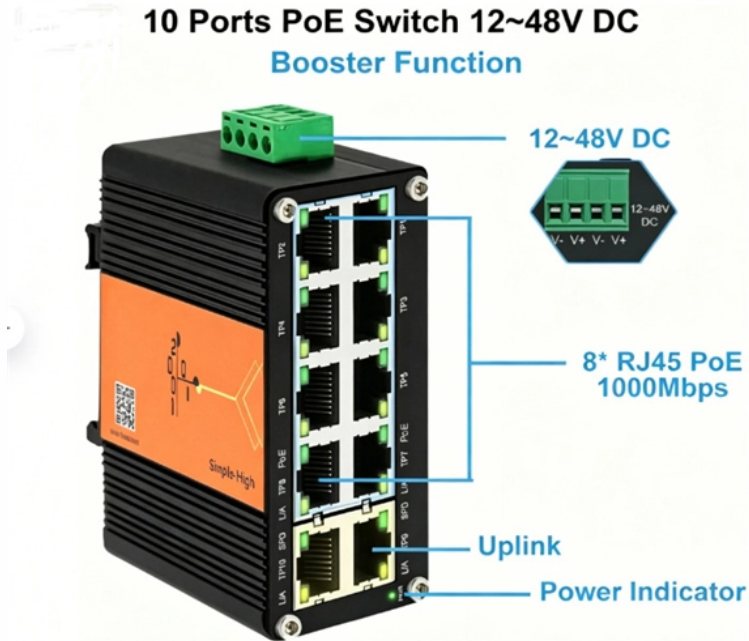


Precise Connection of Cable Tray Tees



Precise Connection of Cable Tray Tees



These are 3 piece splices that utilize bolt and nut to securely attach and bond tray sections. The Double Splice cuts the required number of splice hardware down to a minimal number versus traditional ...



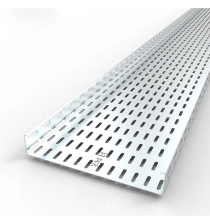
Our cable routing systems are easy to install and can be extended. Our broad range of standard cable trays are particular well-suited for cabling in buildings. Cable ...



Tees and X Junctions Wire Mesh Cable Tray Reducer and Tee Junction Instructions CABLE TRAY CUTTING & BENDING GUIDES CONFIGURING CABLE TRAYS FOR INSTALLATION Horizontal Tees



Cable tray length is selected based on the load to be supported, the distance between the supports (also referred to as the span), and handling and installation constraints.



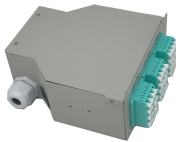
When fitting cable trays and their accessories, the products are cut on site to create changes of direction, adjust sections, etc. Damage can also occur during handling; as a result, both the ...



Cable Tray Tee fitting | Cable Tray T joining formula Part - 2 How to make Cable Tray REDUCER. (300mm to 100mm) Practical tutorial 3 BENDING 90 DEGREE CABLE TRAY IN 4 QUARTER...



Snake Tray manufactures cable trays, power distribution solutions and cost-effective cable management systems for data centers, solar installations, transit & more.



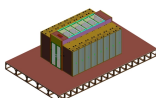
Offset Vertical Connector for Center Hung cable tray. Splice Connector for Center Hung cable tray. Horizontal Hinge Connector for Center Hung cable tray.



This document provides details on installing cable trays and their support systems. It includes diagrams showing how to mount cable trays on walls using pre-fabricated flanges or channels.



As a less-expensive alternative to conduit, a stronger alternative than wire basket, and superior to generic tray, Snap Track saves on labor and reduces total installed costs.



Guide for making bends, tees, crosses, risers and reducers from straight sections of wire basket cable trays live at the project.



How does it connect to the main tray given that the upturned edge of the main tray would run across the throat of the take-off (unless you chop it out on site).

Contact Us

For more information, pricing, or custom network solutions, please contact us:

Website: <https://www.hashherbcafe.co.za>

Email: hello@hashherbcafe.co.za

Phone: +27 63 814 7295

Address: 15 Galaxy Road, Linbro Business Park, Johannesburg, 2065, South Africa

This document is for informational purposes only. Specifications subject to change without notice.

