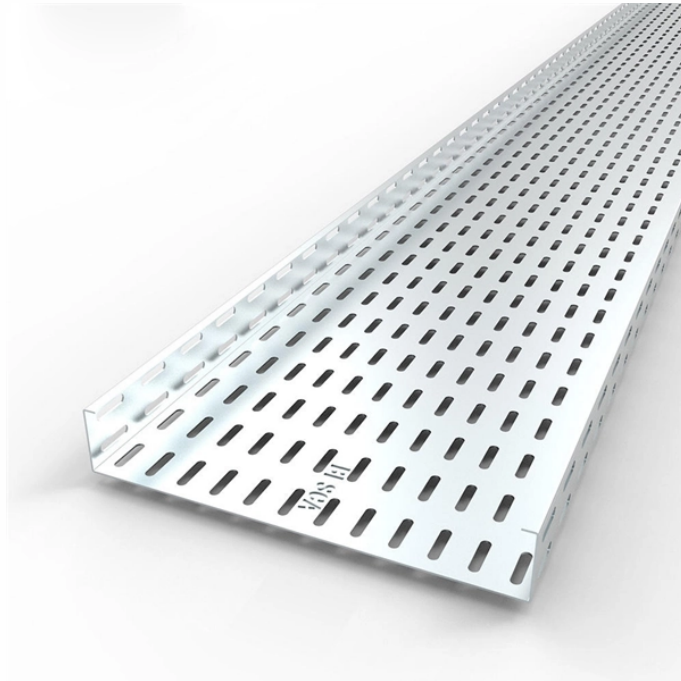


Portuguese dustproof and explosion-proof electrical distribution box factory



Overview

product introduction The BXM (D) series explosion-proof distribution box is a highly secure power distribution and control device specifically designed for explosive hazardous environments. Access Point Opening Reference Table: Can be customized according to requirements Case photo. Dust Explosion-proof Power Distribution Panel MAMX-20 *In—built circuit breaker, AC Contactor, Thermorelay, PLC, Transducer, Soft starter and other components, The panel can install indicator, Pushbutton, Universal switch, Display instrument. *Maximum current: <math>< 630A</math> *Used in industrial environment. According to low tension directive 2014/35/EU. Surface enclosures with a capacity of 4, 6, 8, 12, 18, 24, 36 and 54 modules with transparent window. Halogen-free plastic materials. Base and frame: ABS RAL 7035 grey. Transparent window: PC tinted window, with UV protection. Ex d and Ex tb certified for installation in explosion-hazardous areas. Suitable for use in gas group IIB+H 2 environments. You will benefit from a highly flexible solution tailored precisely to your application. Manufacture custom made Local Control

Stations & Distribution Boxes, local control panel boards and stations, explosion protected control units, distribution.

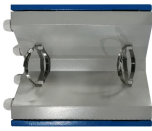
Portuguese dustproof and explosion-proof electrical distribution bo



Dust Explosion-proof Power Distribution Panel MAMX-20. *In—built circuit breaker, AC Contactor, Thermorelay, PLC, Transducer, Soft starter and other components, The panel can install indicator, ...



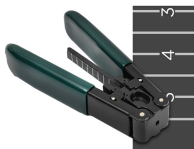
BARTEC offers one of the most extensive ranges of explosion-proof and substance-resistant components, devices, and systems for controlling, switching, and connecting for hazardous areas ...



With features like sealed closures, durable construction, and advanced circuit protection, our explosion-proof distribution boxes provide peace of mind and enhance operational efficiency.



As Dust Explosion-Proof High Protection Power Distribution Device Exporter, MINMILE Supplies Protected Distribution Units Designed For Safe Use In Dusty Hazardous Areas.



These are available in a range of materials including Stainless Steel, GRP & Sheet Steel from IP42 (Indoor) to IP 66 (Outdoor) Applications.



The enclosures are certified Ex d IIB+H2 and Ex tb as well as "explosion-proof". They are available in many sizes, a wide range of operating elements and monitoring functions can be integrated. They ...



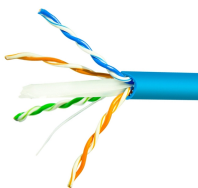
The BXM (D) series explosion-proof distribution box is a highly secure power distribution and control device specifically designed for explosive hazardous environments.



CZ Electric Co., Ltd., located in the Yangtze River Delta Economic Zone-Jiaxing City, Zhejiang Province, is a national high-tech enterprise. It is an explosion-proof solution provider with safety as its core.



Atex control stations, explosion protected control units and distribution boxes made stainless steel maritime grade AISI 316L or AISI 304L. Atex Delvalle provides a custom build facility for Hazardous ...



Transparent window: Recommended for outdoor use: UV protection according to the ISO 4892-2 standard, method A: 1000 h. Supplied in individual packaging. When several items are sent together, ...

Contact Us

For more information, pricing, or custom network solutions, please contact us:

Website: <https://www.hashherbcafe.co.za>

Email: hello@hashherbcafe.co.za

Phone: +27 63 814 7295

Address: 15 Galaxy Road, Linbro Business Park, Johannesburg, 2065, South Africa

This document is for informational purposes only. Specifications subject to change without notice.

