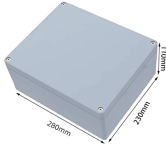


Place UPS in the front cabinet



Place UPS in the front cabinet



The UPS cabinets use forced air cooling to regulate internal component temperature. Air inlets are in the front of the cabinet and outlets are in the top. Allow clearance in front of and above each cabinet for ...



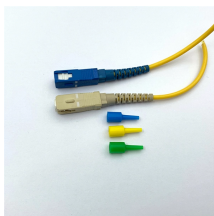
Our buying guide has information on the difference in UPS form factors and where such form factors can be installed.



Follow the maintenance bypass cabinet installation manual for seismic anchoring, mechanical installation, interconnection, power cabling, and signal cable routing for the UPS and the ...



The UPS should ideally be installed close to the loads. If the distance between the load and the UPS is greater, we must take into account the voltage drop based on the length of the cable ...



Discover the optimal UPS room layout for your uninterrupted power supply needs. Explore Vital Power's comprehensive guide for efficient UPS installation and management.



Install your UPS correctly with our step-by-step guide. From unboxing to testing, learn how to set up your backup power system safely and efficiently.



Install your UPS correctly with our step-by-step guide. From unboxing to testing, learn how to set up your backup power system safely and efficiently.



In effect, we need to position the UPS to protect itself—accessible to the front panel and to the rear for plugs and safe from environmental issues. These are the main considerations.



A blog guide on how to connect and power server cabinet PDUs from uninterruptible power supplies covering PDU outlet types, UPS ratings and electrical works by Server Room ...



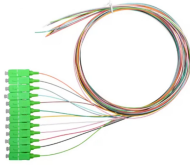
I'd like to get battery backup for it but am wondering if it's safe to put the UPS in one of the cabinets. It's a sliding door so there is a little ventilation from the front.



In order to provide for adequate ventilation, the UPS should be installed in a room, which has at least 1000mm of clearance on the top side or the rear side of the UPS based on the ventilation type. This ...



Follow these simple steps to install your APC Smart-UPS™ Ultra UPS in rackmount position.



If you only have a plug-receptacle UPS cabinet, use bolts to attach the UPS front panel to the rack and continue to the startup section in the Eaton FERRUPS Rack Mount UPS (850 VA-7 kVA) User's Guide.

Contact Us

For more information, pricing, or custom network solutions, please contact us:

Website: <https://www.hashherbcafe.co.za>

Email: hello@hashherbcafe.co.za

Phone: +27 63 814 7295

Address: 15 Galaxy Road, Linbro Business Park, Johannesburg, 2065, South Africa

This document is for informational purposes only. Specifications subject to change without notice.

