

# Parameters of Tanzanian Secondary Distribution Box



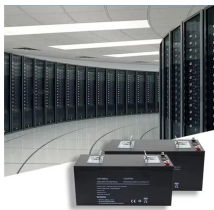
## Parameters of Tanzanian Secondary Distribution Box



This study focused on the maintenance automation in distribution and transmission networks in Tanzania power systems, where intelligent equipment fault identification has not previously been ...



In this work, an objective function is developed to optimally size two types of RDG using two modern meta-heuristic algorithms for optimal loss reduction in radial power distribution networks.



To analyse the hosting capacity of this distribution grid the two following steps have been conducted: the first one is to model the distribution grid using the Bricks Approach defining a short, medium, long ...



AR. s . fo. ze. ◆. er. na. t . ◆. S. nd . Co. 19( B. 1: . Lau. eci. Ba. on . ◆. urr. wh. 22. ati. 24. 50: : 2. S 5. . : 2. tch. Spe. nal. t-1. (E) ros. 7(E. eci. ize. les.



3kV distribution lines in Kinondoni and Ilala districts, the central districts of Dar es Salaam. The parts to be borne by the Japanese side were implemented as planned, except for some minor changes such ...



Our study uses the Dissolved Gas Analysis tool to collect the transformer parameters used in algorithm design. The parameter analysis was performed using Statistical Package for Social Sciences software.



Therefore, this paper investigates fault types, causes, and indicators specifically on oil-based transformers in Tanzania's ESDN using the oil analysis technique and the Dissolved Gas ...



Any developer planning to use PURPA should analyze first how likely it is to end up battling with the utility before the state public utility commission and, if so, with what likelihood of success.



This document is the 9th edition of TANESCO Distribution Engineering Instruction Manual which provides guidelines on various aspects of distribution engineering for TANESCO such as health and ...



In a radial distribution network, power flow is unidirectional, flowing from upstream to downstream buses. In that regard, power can flow from node  $i$  to node  $j$  via a branch which can be represented as ...

## Contact Us

For more information, pricing, or custom network solutions, please contact us:

Website: <https://www.hashherbcafe.co.za>

Email: [hello@hashherbcafe.co.za](mailto:hello@hashherbcafe.co.za)

Phone: +27 63 814 7295

Address: 15 Galaxy Road, Linbro Business Park, Johannesburg, 2065, South Africa

This document is for informational purposes only. Specifications subject to change without notice.

