

Parameters of Belarusian tubular busbars



Overview

Busbars can achieve lengths of approximately 140 meters when welded, facilitating extensive installations. To mount a bus bar to an assembly structure, hardware (studs, holes, etc.) can be manufactured into the conductors. Mersen offers in-house conductor plating in tin. Abstract: Proper busbar selection based on analytical calculations is of great importance in terms of power grid functioning and its safe usage. Calculations of the. 1. 10 Line to ground distance of 4"EH IPS Al Tube. 5 Indal Aluminium busbars book. Using alloy 6101B T7, busbars can handle a current capacity of 3000A with dimensions of 100/10, 120/6, or 160/4.

Parameters of Belarusian tubular busbars



In this paper on the basis of the electromagnetic field theory, the magnetic fields around three-phase tubular busbars in a parallel arrangement have been analyzed, and the formulas to...



It provides information on selecting the appropriate diameter and wall thickness of aluminum tubular busbars based on factors like the nominal current, required short-circuit current, center-line distance ...



Aluminium tubular busbars offer lighter weight and higher stiffness compared to stranded conductors, enhancing support efficiency. Busbars can achieve lengths of approximately 140 meters ...



The current-carrying capacity of a tubular busbar can be calculated by determining the influencing parameters and resolving the power balance according to the current, which only affects ...



In this paper analytical calculations of asymmetric three-phase busbar system were carried out. Key parameters, like maximal electrodynamic forces value, mechanical strength value, busbar...



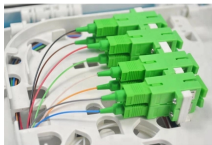
Aluminium tubular busbars offer lighter weight and higher stiffness compared to stranded conductors, enhancing support efficiency. Busbars can ...



Important characteristics of laminated bus bars are resistance, series inductance, and capacitance. As performance parameters of electronic equipment and components become more stringent, these ...



Technical parameters and characteristics ... Upon the manufacturer's consent, busbar length and diameter may change depending on the values of nominal current, short circuit current, span length, ...



- Reduces the risk of injury during maintenance when the tension or compression in the busbars is released.
- Deformation in the axial direction is required to be less than 3/8" to avoid collision ...



The parameters to be considered while designing the busbar are effect of the physical dimensions, flexible terminals, apertures, inductance, capacitance and ratio of width to thickness.



Tube (SCH.80) (As per INDAL AL. 3590 Amps busbar Book.) Distance between two supporting points of Al. Tube = 8.050 m.

Contact Us

For more information, pricing, or custom network solutions, please contact us:

Website: <https://www.hashherbcafe.co.za>

Email: hello@hashherbcafe.co.za

Phone: +27 63 814 7295

Address: 15 Galaxy Road, Linbro Business Park, Johannesburg, 2065, South Africa

This document is for informational purposes only. Specifications subject to change without notice.

