

Outdoor steel fiber optic cable installation

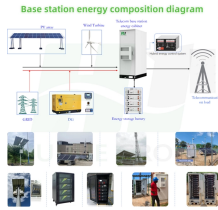


Overview

Plan your outdoor fiber installation carefully by surveying the site, choosing the right cable type, and following FOA and OSP standards to ensure reliability. Select the best installation method—direct burial, aerial, conduit, or underwater—based on your environment and future network needs. Use. Therefore, understanding the characteristics of outdoor fiber optic cables and mastering proper installation methods is crucial. (FOA) was founded in 1995 to help develop the workforce to build the fiber optic networks to support a rapid expansion in communications and the Internet. This guide covers how to.



Outdoor steel fiber optic cable installation



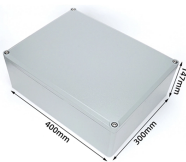
This article will provide an in-depth analysis of outdoor cable types, key selection criteria, core installation steps, critical precautions, as well as subsequent testing and maintenance guidelines, ...



The FOA Outside Plant Construction Guide is a concise reference for the installation of fiber optic cables, including the construction involved in underground, direct-buried and aerial cables.



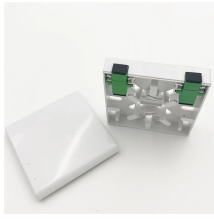
Explore proven methods for outdoor fiber optic cable installation and maintenance, covering essential tools, environmental factors, and durability best practices.



The key to success lies in multi-layer protection—choosing outdoor-rated cables, using conduits or armor where necessary, and ...



Explore best practices for installing indoor and outdoor fiber optic cables, including conduit, direct burial, riser, and aerial applications. Build stable, long-lasting networks.



Learn how to choose and install the perfect outdoor cable for unmatched performance. Explore now.



The following contains information on the placement of fiber optic cables in various indoor and outdoor environments. In general, fiber optic cable can be installed with many of the same techniques used ...



The key to success lies in multi-layer protection—choosing outdoor-rated cables, using conduits or armor where necessary, and maintaining proper grounding, sealing, and inspection ...



By following these steps and precautions, you ensure your outdoor fiber optic cable installation will withstand extreme weather, soil corrosion, and dynamic stress.



These cables are designed to meet both the rigorous environment of the outdoors but can also be routed indoors, where flame rating requirements also apply. This type of cable eliminates the need ...



Support structures for fiber optic cable installations should be completed before the installation of the fiber optic cable itself. Outside plant structures should be installed in conformance with all permits ...

Contact Us

For more information, pricing, or custom network solutions, please contact us:

Website: <https://www.hashherbcafe.co.za>

Email: hello@hashherbcafe.co.za

Phone: +27 63 814 7295

Address: 15 Galaxy Road, Linbro Business Park, Johannesburg, 2065, South Africa

This document is for informational purposes only. Specifications subject to change without notice.

