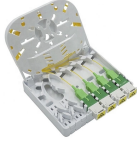


Outdoor distribution box pen grounding



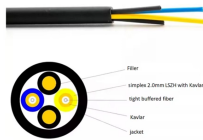
Outdoor distribution box pen grounding



Each DISTRIBUTION BOX and controller must be grounded. On the US market, a 5.26 mm² (10 AWG) ground wire must be used, and in all other markets a 6 mm² must be used.



Each Power Circuit Breaker or Power Transformer having a bushing Voltage Transformer on the tank shall have the Voltage Transformer provided with a separate ground lead, independent of the ...



Our Outdoor Ground Box comes with 32A power connections, audio connections or even potable water inlet feeds. The receptacles are weatherproof and perfect for use in outdoor market areas which may ...



With this convenient distribution box with a standard pin cable you can connect up to 4 grounding products with a grounded wall socket or a grounded extension cord in a grounded wall socket.



For an ungrounded separately derived system, the equipment grounding conductor shall be connected to the grounding electrode conductor at, or ahead of, the system disconnecting means or overcurrent ...



Water is one of the toughest challenges outdoor power can face—especially in stadiums, campuses and public venues. The Outdoor Ground Box uses a diving bell design to protect electrical connections ...



Bury in the ground or in concrete to protect and access utilities such as electric and water lines. Choose from our selection of ground boxes, including over 1,000 products in a wide range of styles and sizes. ...



Discover essential insights on outdoor protective grounding boxes, including features, installation, maintenance, and industry applications for enhanced electrical safety.



Whether you're a seasoned pro or just starting out, this comprehensive guide will give you practical insights into proper grounding techniques, with a special focus on how selecting quality materials ...



These requirements apply as long as applicants complete the approved projects within 18 months.



With this convenient distribution box with a standard pin cable you can connect up to 4 grounding products with a grounded wall socket or a grounded extension cord ...

Contact Us

For more information, pricing, or custom network solutions, please contact us:

Website: <https://www.hashherbcafe.co.za>

Email: hello@hashherbcafe.co.za

Phone: +27 63 814 7295

Address: 15 Galaxy Road, Linbro Business Park, Johannesburg, 2065, South Africa

This document is for informational purposes only. Specifications subject to change without notice.

