

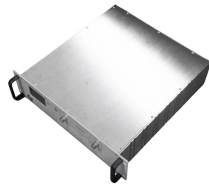
## Optical power meter red light pen



## Optical power meter red light pen



CRASH-PROOF AND DUST-PROOF DESIGN FOR PEN HEAD - It Is Designed With Stainless Steel Head To Prevent Crash And Dust, And The Case Ground Design Prevents ESD Damage Efficiently; ...



High Precision Measurement: Our Optical Power Meter Red Light Pen utilizes advanced InGaAs detector technology to provide accurate and reliable measurements within a dynamic ...



This is simply a movable laboratory for fiber optic engineers! Red light + optical power dual-core drive, accurate and efficient!



The SAMZHE SZ-GG01 High-Precision Optical Power Meter is an all-in-one tool designed for fiber optic testing. Equipped with a red light pen, it can detect faults and measure optical power up to 10 km. ...



Find many great new & used options and get the best deals for Optical Power Meter Red Light Pen 4 in 1 High Precision Optical Fiber Pen New at the best online prices at eBay!



VFLs are easy to operate, efficient, portable, and cost-effective, making them an essential tool for fiber optic installation, maintenance, and troubleshooting. The optical fiber red light pen has good quality ...



\*In the era of high bandwidth, reliable fiber optic power equipment is particularly important. This handheld photometer can help check cable performance, calculate relative power loss, locate faults, ...



The Y3 Handheld Optical Power Meter & Red Light Pen All-in-One Series is a professional tool designed for continuous optical signal power measurement and fiber continuity testing. ...



The Y3 Optical Power Meter with Built-in VFL is an efficient 2-in-1 testing tool combining a high-accuracy optical power meter with a 650nm red light visual fault locator. Designed for fiber professionals, it ...



The Visual Fault Locator (VFL) Pen has a visible red light source centered on 650nm. Tool sends visible light over a fiber strand with a 10mW power, good enough to reach distances of up to 10Km.

## Contact Us

For more information, pricing, or custom network solutions, please contact us:

Website: <https://www.hashherbcafe.co.za>

Email: [hello@hashherbcafe.co.za](mailto:hello@hashherbcafe.co.za)

Phone: +27 63 814 7295

Address: 15 Galaxy Road, Linbro Business Park, Johannesburg, 2065, South Africa

This document is for informational purposes only. Specifications subject to change without notice.

