

## Optical Module Base Manufacturing Process



## Optical Module Base Manufacturing Process



Optical lenses and camera modules sit in the midstream of the optical industry chain. A lens focuses a scene onto film or an image sensor to form an optical image. A camera module ...



This page describes every stage of optical device production, such as pump lasers, gain chips, semiconductor amplifiers, and light sources for sensors.



We can participate and propose in all stages of the process from planning to realization of products. We offer optimal solutions for optical products fabrication, based on our decades of experience in ...



This paper has served as a basic introduction to the manufacturing process. However, there are many subtleties and a variety of other processes that are available for manufacturing lenses.



The optical module PCBA manufacturing process involves assembling optoelectronic devices and electronic components onto printed circuit boards. Through a series of processing steps, this ...



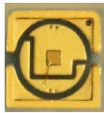
This article describes the end-to-end manufacturing process of optical modules, starting from customer demands and proceeding through material selection, design, and production.



It will explore the complete product lifecycle, from design principles and advanced material selection to the intricacies of precision fabrication, electro-optical assembly, and quality validation.



This article provides a comprehensive overview of LSOLINK's core production and quality control process for optical modules, from raw materials to finished products, ensuring the compatibility and ...



Manufacturing Process Requirements for Optical Module PCBs As optical modules are employed for high-speed data transmission and optoelectronic conversion, the manufacturing quality of their PCBs ...



This article focuses on the key points of optical module processing and manufacturing process control, and how to manage and control such products from the design, technical, and ...

## Contact Us

For more information, pricing, or custom network solutions, please contact us:

Website: <https://www.hashherbcafe.co.za>

Email: [hello@hashherbcafe.co.za](mailto:hello@hashherbcafe.co.za)

Phone: +27 63 814 7295

Address: 15 Galaxy Road, Linbro Business Park, Johannesburg, 2065, South Africa

This document is for informational purposes only. Specifications subject to change without notice.

