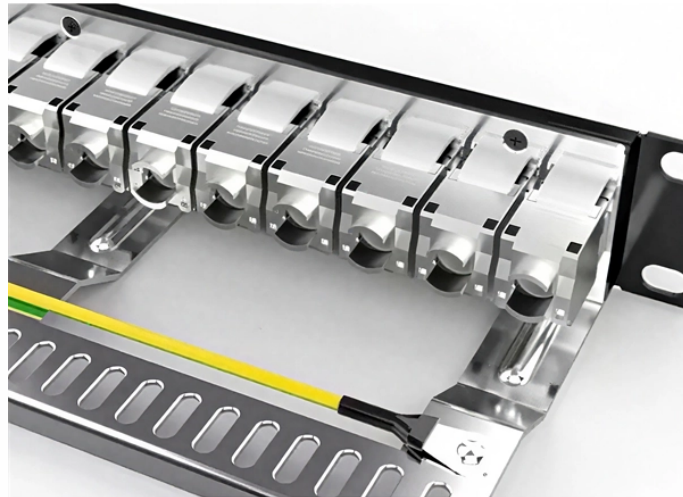


Open ports on Huijue core switch



Overview

To enable a port on a Huawei switch, start by accessing the device's command-line interface (CLI) via a console cable or SSH. Use the system-view command to enter configuration mode, then navigate to the target port using interface GigabitEthernet 0/0/1 (replace with. Configuring ports on a Huawei switch is a fundamental yet critical task for network administrators. Whether you're setting up a new network segment or troubleshooting connectivity issues, understanding how to enable ports properly ensures seamless data flow while maintaining security. I will give an example of setting up ports on Huawei switches. Use the following AAA commands to create a new user. For example: Replace USERNAME with the new username, set the password, define service-type (telnet, ssh, etc.), and specify. This document describes how to check the switch interface or port status and how to locate an interface physically down fault and restore the interface to the up state. To view port configurations, you.

Open ports on Huijue core switch



I will give an example of setting up ports on Huawei switches. For the test, I will execute commands on the Huawei Quidway S2326TP-EI. Loading...



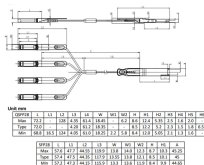
Open port guides for Huawei listed by model.



I will give an example of setting up ports on Huawei switches. For the test, I will execute commands on the Huawei Quidway S2326TP-EI. After we connect to the switch, go to the configuration mode:



We understand the nuances of different networking switches and can guide you through the process, ensuring a smooth transition and operation. Our goal is to provide high-quality network ...



This guide dives into the step-by-step process of port configuration on Huawei switches, while addressing the often-overlooked question: Does opening ports inadvertently create backdoors ...



The text covers tasks such as creating a user, VLAN configuration, port settings, enabling SSH and Telnet services, configuring Spanning Tree Protocol (STP), and other basic management operations ...



In the daily maintenance of Huawei switches, we need to use various inspection commands. Today, let's take a look at the commonly used inspection commands related to port and ...



In this tutorial, we will guide you through the process of configuring access and trunk ports on Huawei Switches.



This document describes how to check the switch interface or port status and how to locate an interface physically down fault and restore the interface to the up state.



I'm excited to share Network Management, an open-source platform I've built for enterprise network infrastructure automation. This tool consolidates multiple applications for ...

Contact Us

For more information, pricing, or custom network solutions, please contact us:

Website: <https://www.hashherbcafe.co.za>

Email: hello@hashherbcafe.co.za

Phone: +27 63 814 7295

Address: 15 Galaxy Road, Linbro Business Park, Johannesburg, 2065, South Africa

This document is for informational purposes only. Specifications subject to change without notice.

