

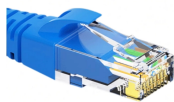
# OPGWADSS Optical Cable Junction Box



## OPGWADSS Optical Cable Junction Box



The metal optical cable splice closure is made of aluminum alloy with perfect seal. ...



Fibre optic metal joint box/joint closure/splice closure is used for the continuation of the optical cable in the middle of the tower, which has the advantages of high mechanical strength, good sealing ...



This splice closure uses adjustable diameter cushion rings for clamping the optical cables, preventing damage such as pinching. It holds up to 144 fibers, with a storage disk capacity of 48 ...



Furnished with four plugged cable ports (2 aluminum and 2 plastic) for either All-Dielectric Self-Supporting (ADSS) or Optical Ground Wire (OPGW) cables, the splice enclosure can be pre ...



This product is applicable to connection and protection of special power cable OPGW (Optical Fiber Composite Overhead Ground Wire) and ADSS (All Dielectric Self-Supporting Optical Fiber Cable), ...



Loose storage space makes storage more conveniently, quickly and cable bending radius big enough, avoiding fiber optic extra loss and ensuring transmission performance. The double sealed designs ...



Fibre optic metal joint box/joint closure/splice closure is used for the continuation of the optical cable in the middle of the tower, which has the advantages of high ...



The ADSS/OPGW metal junction box is also called a splicing box that is designed to house the fiber core splices to the outdoor intermediate optical cable leading to the patch panel in the control room.



OPGW splice box provides essential features such as protection, sealing, compatibility, durability, easy access, temperature resistance, and modularity to ensure the reliability and longevity of OPGW cable ...



The metal optical cable splice closure is made of aluminum alloy with perfect seal. It features in high mechanical strength, good airtight and anti-corrosive. Having been sealed with sealing ring and ...



(1) optic fiber joint box is designed for splicing ADSS, OPGW cables and the normal cables, including two to four sleeves for input and output.  
(2) Ensure the transmission characteristics of optical fiber.



ADSS/OPGW Metal Junction Box The ADSS/OPGW Metal Junction Box, also known as a splicing box or Metal Joint Junction Box, is designed to house fiber core splices for outdoor intermediate optical ...

## Contact Us

For more information, pricing, or custom network solutions, please contact us:

Website: <https://www.hashherbcafe.co.za>

Email: [hello@hashherbcafe.co.za](mailto:hello@hashherbcafe.co.za)

Phone: +27 63 814 7295

Address: 15 Galaxy Road, Linbro Business Park, Johannesburg, 2065, South Africa

This document is for informational purposes only. Specifications subject to change without notice.

