

## Number of fiber optic connectors



## Number of fiber optic connectors



The most commonly used fiber optic connectors are LC and SC connectors due to their reliability, ease of use, and compatibility with both single-mode and multimode fiber optic cables.



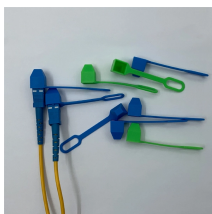
Lucent Connectors Standard Connectors St Connectors Ferrule CORE Connectors Multi-Position Connectors MT-RJ Connectors Lucent Connectors, typically known as LC connectors, were developed by Lucent Technologies as a small form factor solution to fiber optic connections. They have some of the smallest ferrules at just 1.25mm thick, making them a small-form-factor fiber connector type. Their size, square shape, and duplex header design make them ideal for heavily popu... See more on cable matters I-p



In the present fiber connector market, there are about 100 fiber optic cable connectors in total. And the most commonly used fiber connector types includes LC, SC, MU, ST, FC, MTRJ, NID, E2000 and ...



About 100 fiber-optic connector types have been introduced in today's market, but only a small subset is common in modern networks. Each type is optimized for specific uses and includes ...



But with so many different types of fiber optic connectors available, it can be difficult to know which one is right for your specific needs. On this page, we'll compare the different types of fiber optic ...



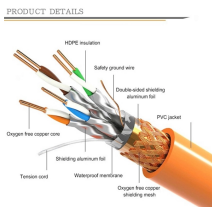
This article explores the wide range of fiber optic connector types, from legacy SC and ST to modern MPO/MTP and VSFF designs. Learn how each connector works, where it's used, and ...



Fiber optic connectors, also known as terminations, connect two ends of fiber optic cables. This allows for quickly connecting and disconnecting of fiber optic cables without splicing.



There are different fiber optic connectors types, including LC/SC/ST/FC/MU/DIN fiber connectors, Rosenberger Q-RMC/NEX10 connectors and more. Simplex vs duplex fiber connectors, ...



When you look at 8, 12, 16, and 24 fiber MPO connectors, you can see they have different numbers of fibers and designs. Each one is good for different network jobs. The number of fibers changes how ...



Discover the common fiber connector types. Learn the differences, uses, and best practices for SC, LC, ST, FC, MPO/MTP connectors.



If you only remember one thing: MPO is a multi-fiber connector standardized under IEC 61754-7 that allows you to terminate 8, 12, 16, 24, or even 32 fibers in a single rectangular ferrule. ...

## Contact Us

For more information, pricing, or custom network solutions, please contact us:

Website: <https://www.hashherbcafe.co.za>

Email: [hello@hashherbcafe.co.za](mailto:hello@hashherbcafe.co.za)

Phone: +27 63 814 7295

Address: 15 Galaxy Road, Linbro Business Park, Johannesburg, 2065, South Africa

This document is for informational purposes only. Specifications subject to change without notice.

