

Norwegian imported ADSS optical cable G 652



Norwegian imported ADSS optical cable G 652



Recommendation ITU-T G.652 describes the geometrical, mechanical and transmission attributes of a single-mode optical fibre and cable which has zero-dispersion wavelength around 1310 nm.



PE single jacket with additives makes a resistant, durable and easy to strip cable, providing superior protection against UV radiation, fungus, abrasion and other environmental factors. The SZ-stranded ...



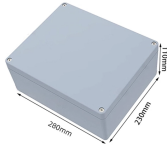
Both cables use G.652D single mode optical fiber and are designed for aerial installation. They meet various optical and mechanical performance standards for attenuation, bending, crushing, and ...



APPLICABLE STANDARDS IEC / EN 60793-2-50 type B-652.D ITU-T Recommendation G.652.D



Very strong cable with multi-tube construction (12 fibers per tube) designed for overhead installations on spans up to 150 meters. It was reinforced with a central FRP rod (Fiber Reinforced Polymer) with a ...



Outdoor dry core (ADSS) optical fiber Multi Loose Tube cable with aramid yarns as strength member and polyethylene outer jacket. Product feature: This cable has all dielectric and self-supporting ...



Find out all of the information about the Prysmian Group product: single-mode optical cable G.652 Series. Contact a supplier or the parent company directly to get a quote or to find out a price or your ...



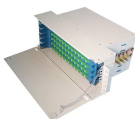
This specification covers the design requirements and performance standard for the supply of optical fibre cable in the industry. It also includes ARTIC premium designed cable with optical, mechanical ...



We offer a wide range of DeepBlue Telecom products like ADSS Fiber Optic Cable, 48FO, G652D, Span 120 meters, 4km/Drum, SOI at affordable prices.



The mechanical and environmental performance of the cable are in accordance with the following table. Unless otherwise specified, all attenuation measurements required in this section shall be performed ...



AFL-ADSS® (All-Dielectric Self-Supporting) cable is ideal for installation in distribution as well as transmission environments, even when live-line installations are required.

Contact Us

For more information, pricing, or custom network solutions, please contact us:

Website: <https://www.hashherbcafe.co.za>

Email: hello@hashherbcafe.co.za

Phone: +27 63 814 7295

Address: 15 Galaxy Road, Linbro Business Park, Johannesburg, 2065, South Africa

This document is for informational purposes only. Specifications subject to change without notice.

