

Norway Tunable Optical Module DML

Length:14.5mm
Small-end inner diameter:2.0mm
Large-end inner diameter:3.5mm
Outer diameter:5.2mm



Norway Tunable Optical Module DML



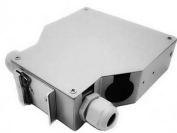
We have developed the AQ2200-136 compact tunable laser source module with a wide wavelength range of 200 nm (1440 to 1640 nm) and a maximum output power of +7 dBm or greater, as a plug-in ...



Featuring a single +12V DC power supply and a SMA RF input connector, this ...



EML and DML are two essential laser technologies used in 100G/200G/400G/800G transceivers. The key differences between EML and DML will be illustrated in this article.



This article compares the four main types—VCSEL, FP, DFB, and EML—highlighting their strengths, limitations, and how LINK-PP includes them in its optical transceivers product line.



This article compares the four main types—VCSEL, FP, DFB, and EML—highlighting their strengths, limitations, and how LINK-PP includes them in ...



Short Description: ROF-DML series analog wideband direct-modulated optical emission module, using high linear microwave direct-modulated DFB laser ...



It is designed for use in small form-factor pluggable transceivers and other types of optical modules for high-speed telecommunication and data applications.



The optical signal transmitted through optical fibers is not constant; instead, it is a modulated signal with varying intensity. The characteristics and application ...



Basic design is based on HL13B5 with high reliability and high productivity.



Learn about key optical module parameters, focusing on DML (Directly Modulation Laser) and EML (External Modulation Laser) modulation modes to enhance your purchasing decisions.



Short Description: ROF-DML series analog wideband direct-modulated optical emission module, using high linear microwave direct-modulated DFB laser (DML), fully transparent working mode, no RF ...



The directly-modulated laser (DML) is a cost-effective solution for 10Gbps digital transmission of up to 60 km using traditional intra-city SMF-28 single-mode fiber links.

LoRawan outdoor base station



The optical signal transmitted through optical fibers is not constant; instead, it is a modulated signal with varying intensity. The characteristics and application differences between DML and EML modulation ...



Featuring a single +12V DC power supply and a SMA RF input connector, this module is easy to operate and integrate. The module can be controlled remotely via the RS485 interface. Wavelength other ...

Contact Us

For more information, pricing, or custom network solutions, please contact us:

Website: <https://www.hashherbcafe.co.za>

Email: hello@hashherbcafe.co.za

Phone: +27 63 814 7295

Address: 15 Galaxy Road, Linbro Business Park, Johannesburg, 2065, South Africa

This document is for informational purposes only. Specifications subject to change without notice.

