

Non-standard installation method for distribution boxes



Overview

What Is a Distribution Box?

A distribution box, also known as a power distribution unit, is a critical component in any electrical system. It is the control center fo.



Non-standard installation method for distribution boxes



Learn how to install a distribution box safely and correctly. Covers wiring, placement, standards, and expert tips for a compliant setup.



1.0. Scope This methodology document highlights the technical guidelines for the installation of Electrical Distribution Boards (DBs).



Article 300 is primarily concerned with how to install, route, splice, protect, and secure conductors and raceways. How well you understand and apply the requirements of this article will usually be evident ...



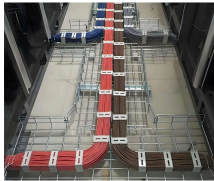
Panelboards shall be mounted in cabinets, cutout boxes, or enclosures designed for the purpose and shall be dead front. However, panelboards other than the dead front externally-operable type are ...



1.0. Scope This methodology document highlights the technical guidelines for the installation of Electrical Distribution Boards (DBs).



The Non-SCE Antennas Placed on Distribution Poles Manual provides standards for use by entities seeking to purchase or lease space from SCE for the purpose of installing antennas on distribution ...



The National Electrical Code (NEC) provides comprehensive safety standards for electrical installations, including requirements for electrical panels (main service panels and subpanels or breaker box).



The purpose of generating this method statement is to define the procedure for Installation of Electrical Conduit and boxes through guidelines contained herein to ensure that the job execution ...



If equipment has a foreign standard based on an IEC standard then the designer or specifier must confirm that any differences will not result in reduced safety.



The "Xcel Energy Standard for Electric Installation and Use" is a valuable timesaving publication that will help to determine the necessary requirements for customers' wiring intended to be connected to the ...



Unlike standard distribution boxes that could become shrapnel shards in volatile environments, explosion-proof containers are engineered fortresses that absorb, contain, and vent catastrophic ...



METHOD STATEMENT FOR Electric panel and distribution box installation and termination - Free download as PDF File (.pdf), Text File (.txt) or read online for free. This document provides a method ...

Contact Us

For more information, pricing, or custom network solutions, please contact us:

Website: <https://www.hashherbcafe.co.za>

Email: hello@hashherbcafe.co.za

Phone: +27 63 814 7295

Address: 15 Galaxy Road, Linbro Business Park, Johannesburg, 2065, South Africa

This document is for informational purposes only. Specifications subject to change without notice.

